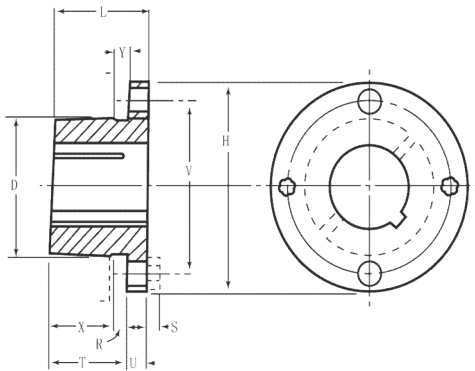
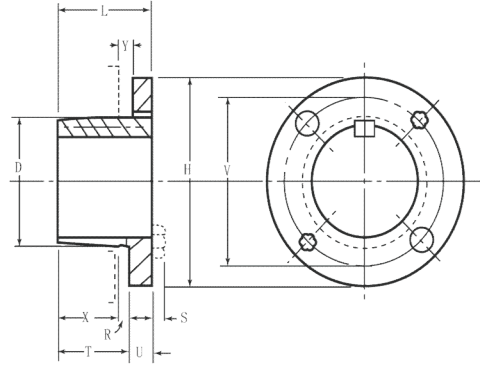


## G - H



Type 1



Type 2

### Type 1

### Split taper bushing specifications

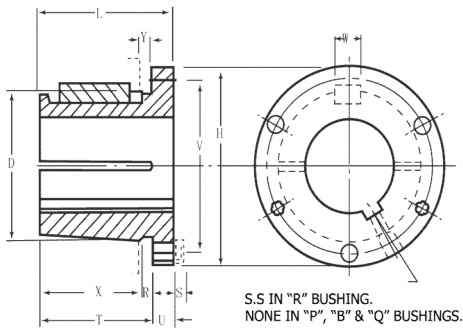
Part No.	Dimensions - Inches											Cap Screws
	L	U	D		H	V	X	Y	R	S	Bore range	
			Large end	Small end								
G	1"	1/4"	1.172"	1.133"	2"	1 9/16"	5/8"	3/16"	1/8"	15/16"	3/8" - 15/16"	2 - 1/4" x 5/8"
H	1 1/4"	1/4"	1.625"	1.570"	2 1/2"	2	7/8"	3/16"	1/8"	1 3/8"	3/8" - 1 3/8"	2 - 1/4" x 3/4"

### Type 2

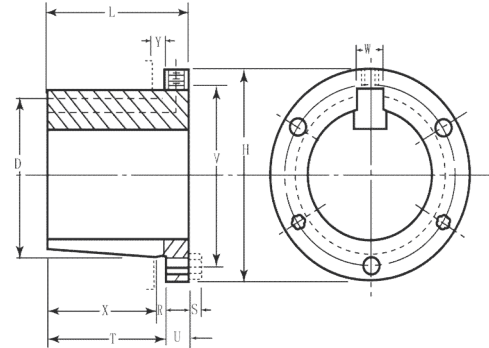
### Split taper bushing specifications

Part No.	Dimensions - Inches											Cap Screws
	L	U	D		H	V	X	Y	R	S	Bore range	
			Large end	Small end								
G	1"	1/4"	1.172"	1.133"	2"	1 9/16"	5/8"	3/16"	1/8"	15/16"	1"	2 - 1/4" x 5/8"
H	1 1/4"	1/4"	1.625"	1.570"	2 1/2"	2	7/8"	3/16"	1/8"	1 3/8"	1 7/16" -- 1 1/2"	2 - 1/4" x 3/4"

## P - R



Type 1



Type 2

S.S IN "R" BUSHING.  
NONE IN "P", "B" & "Q" BUSHINGS.

### Type 1

### Split taper bushing specifications

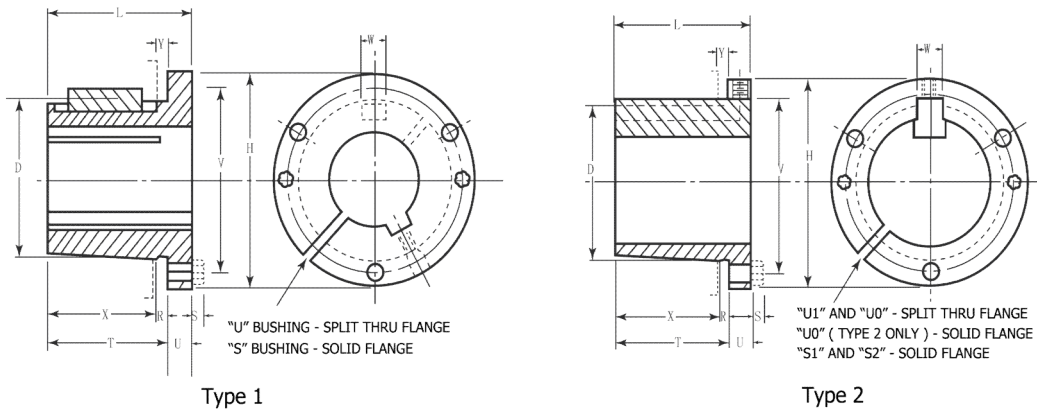
Part No.	Dimensions - Inches											Cap Screws
	L	U	D		H	V	X	Y	R	S	Bore range	
			Large end	Small end								
P1	1 15/16	13/32	1.9375	1.8555	3	2 7/16	3/8	7/32	7/32	1/4	1/2 -- 1 7/16	3 -- 5/16 x 1
P2	2 15/16	13/32	1.9375	1.7930	3	2 7/16	3/8	7/32	7/32	1/4	3/4 -- 1 7/16	3 -- 5/16 x 1
P3	4 7/16	13/32	1.9375	1.6993	3	2 7/16	3/8	7/32	7/32	1/4	1 1/8 -- 1 3/8	3 -- 5/16 x 1
B	1 15/16	1/2	2.6250	2.5567	3 11/16	3 1/8	1/2	7/32	1/4	1/4	1/2 -- 1 5/16	3 -- 5/16 x 1 1/4
Q1	2 1/2	17/32	2.8750	2.7657	4 1/8	3 3/8	1/2	7/32	7/32	9/32	3/4 -- 2 1/16	3 -- 3/8 x 1 1/4
Q2	3 1/2	17/32	2.8750	2.7032	4 1/8	3 3/8	1/2	7/32	7/32	9/32	1 -- 2 1/16	3 -- 3/8 x 1 1/4
Q3	5	17/32	2.8750	2.6094	4 1/8	3 3/8	1/2	7/32	7/32	9/32	1 3/8 -- 1/16	3 -- 3/8 x 1 1/4
R1	2 7/8	5/8	4.0000	3.8750	5 3/8	4 5/8	3/4	1/4	1/4	9/32	1 1/8 -- 2 13/16	3 -- 3/8 x 1 3/4
R2	4 7/8	5/8	4.0000	3.7500	5 3/8	4 5/8	3/4	1/4	1/4	9/32	1 3/8 -- 2 13/16	3 -- 3/8 x 1 3/4

### Type 2

### Split taper bushing specifications

Part No.	Dimensions - Inches											Cap Screws
	L	U	D		H	V	X	Y	R	S	Bore range	
			Large end	Small end								
P1	1 15/16	13/32	1.9375	1.8555	3	2 7/16	3/8	7/32	7/32	1/4	1/2 -- 1 7/16	3 -- 5/16 x 1
P2	2 15/16	13/32	1.9375	1.7930	3	2 7/16	3/8	7/32	7/32	1/4	3/4 -- 1 7/16	3 -- 5/16 x 1
P3	4 7/16	13/32	1.9375	1.6993	3	2 7/16	3/8	7/32	7/32	1/4	1 1/8 -- 1 3/8	3 -- 5/16 x 1
B	1 15/16	1/2	2.6250	2.5567	3 11/16	3 1/8	1/2	7/32	1/4	1/4	1/2 -- 1 5/16	3 -- 5/16 x 1 1/4
Q1	2 1/2	17/32	2.8750	2.7657	4 1/8	3 3/8	1/2	7/32	7/32	9/32	3/4 -- 2 1/16	3 -- 3/8 x 1 1/4
Q2	3 1/2	17/32	2.8750	2.7032	4 1/8	3 3/8	1/2	7/32	7/32	9/32	1 -- 2 1/16	3 -- 3/8 x 1 1/4
Q3	5	17/32	2.8750	2.6094	4 1/8	3 3/8	1/2	7/32	7/32	9/32	1 3/8 -- 1/16	3 -- 3/8 x 1 1/4
R1	2 7/8	5/8	4.0000	3.8750	5 3/8	4 5/8	3/4	1/4	1/4	9/32	1 1/8 -- 2 13/16	3 -- 3/8 x 1 3/4
R2	4 7/8	5/8	4.0000	3.7500	5 3/8	4 5/8	3/4	1/4	1/4	9/32	1 3/8 -- 2 13/16	3 -- 3/8 x 1 3/4

## S - U



### Type 1

### Split taper bushing specifications

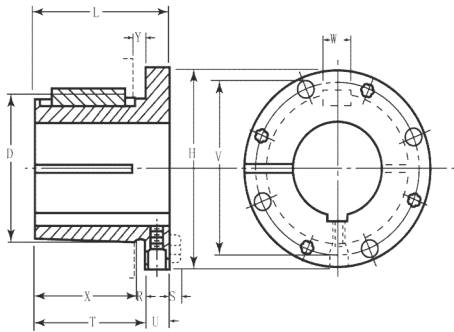
Part No.	Dimensions - Inches											Cap Screws
	L	U	D		H	V	X	Y	R	S	Bore range	
			Large end	Small end								
S1	4 3/8	3/4	4.6250	4.4180	6 3/8	5 3/8	3 1/3	5/16	5/16	3/8	1 11/16 -- 3 3/16	3 -- 1/2 x 2 1/4
S2	6 3/4	3/4	4.6250	4.2696	6 3/8	5 3/8	5 2/3	5/16	5/16	3/8	1 7/8 -- 3 3/16	3 -- 1/2 x 2 1/4
U0	5 1/4	1 1/16	6.0000	5.7656	8 3/8	7	3 3/4	7/16	7/16	15/32	2 3/8 -- 3 1/16	3 -- 5/8 x 2 3/4
U0	4 15/16	3/4	6.0000	5.7656	8 3/8	7	3 3/4	7/16	7/16	15/32	3 1/4 -- 4 1/4	3 -- 5/8 x 2 3/4
U1	7 1/8	1 1/16	6.0000	5.6485	8 3/8	7	5 5/8	7/16	7/16	15/32	2 3/8 -- 4 1/4	3 -- 5/8 x 2 3/4
U2	10 1/8	1 1/16	6.0000	5.4610	8 3/8	7	8 5/8	7/16	7/16	15/32	2 7/16 -- 4 1/4	3 -- 5/8 x 2 3/4

### Type 2

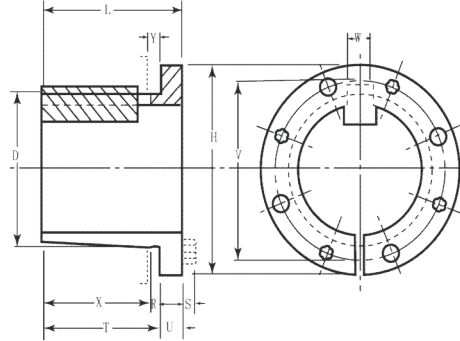
### Split taper bushing specifications

Part No.	Dimensions - Inches											Cap Screws
	L	U	D		H	V	X	Y	R	S	Bore range	
			Large end	Small end								
S1	4 3/8	3/4	4.6250	4.4180	6 3/8	5 3/8	3 1/3	5/16	5/16	3/8	3 1/4 -- 4 1/4	3 -- 1/2 x 2 1/4
S2	6 3/4	3/4	4.6250	4.2696	6 3/8	5 3/8	5 2/3	5/16	5/16	3/8	3 1/4 -- 4 3/16	3 -- 1/2 x 2 1/4
U0	5 1/4	1 1/16	6.0000	5.7656	8 3/8	7	3 3/4	7/16	7/16	15/32	—	3 -- 5/8 x 2 3/4
U0	4 15/16	3/4	6.0000	5.7656	8 3/8	7	3 3/4	7/16	7/16	15/32	4 3/8 -- 5 1/2	3 -- 5/8 x 2 3/4
U1	7 1/8	1 1/16	6.0000	5.6485	8 3/8	7	5 5/8	7/16	7/16	15/32	4 3/8 -- 5 1/2	3 -- 5/8 x 2 3/4
U2	10 1/8	1 1/16	6.0000	5.4610	8 3/8	7	8 5/8	7/16	7/16	15/32	4 3/8 -- 5	3 -- 5/8 x 2 3/4

## W - Y



Type 1



Type 2

### Type 1

### Split taper bushing specifications

Part No.	Dimensions - Inches											Cap Screws
	L	U	D		H	V	X	Y	R	S	Bore range	
			Large end	Small end								
W1	8 1/4	1 7/16	8.5000	8.1016	12 1/2	10	6 3/8	7/16	7/16	9/16	3 3/8 -- 6 3/16	4 -- 3/4 x 3
W2	11 1/4	1 7/16	8.5000	7.9141	12 1/2	10	9 1/2	7/16	7/16	9/16	3 3/8 -- 6 3/16	4 -- 3/4 x 3
Y0*	11 1/8	2	12.0000	11.4688	16 1/2	14 1/2	8 1/2	5/8	5/8	5/8	6 -- 7 15/16	4 -- 1 x 5

### Type 2

### Split taper bushing specifications

Part No.	Dimensions - Inches											Cap Screws
	L	U	D		H	V	X	Y	R	S	Bore range	
			Large end	Small end								
W1	8 1/4	1 7/16	8.5000	8.1016	12 1/2	10	6 3/8	7/16	7/16	9/16	6 1/4 -- 7 7/16	4 -- 3/4 x 3
W2	11 1/4	1 7/16	8.5000	7.9141	12 1/2	10	9 1/2	7/16	7/16	9/16	6 1/4 -- 7 7/16	4 -- 3/4 x 3
Y0*	11 1/8	2	12.0000	11.4688	16 1/2	14 1/2	8 1/2	5/8	5/8	5/8	8 -- 10	4 -- 1 x 5

## Split taper bushings bore & keyway - Inches

Bushing	Bore range	Keyway
G	3/8, 7/16 1/2, 9/16 5/8, 11/16, 3/4, 13/16, 7/8 15/16, 1	No keyway 1/8 x 1 1/16 3/16 x 3/32 1/4 x 1/8
H	3/8, 7/16 1/2, 9/16 19/32, 5/8, 21/32, 11/16, 3/4, 25/32, 13/16, 7/8 15/16, 31/32, 1, 1 1/16, 1 1/8, 1 3/16, 1 1/4 1 5/16, 1 3/8 1 3/8, 1 7/16, 1 1/2	No keyway 1/8 x 1 1/16 3/16 x 3/32 1/4 x 1/8 5/16 x 5/32 3/8 x 3/16
P1	1/2, 9/16 5/8, 21/32, 3/4, 25/32, 13/16, 7/8 15/16, 31/32, 1, 1 1/16, 1 1/8, 1 3/16, 1 1/4 1 5/16, 1 3/8 1 3/8, 1 7/16, 1 1/2, 1 9/16, 1 5/8, 1 11/16, 1 3/4	1/8 x 1 1/16 3/16 x 3/32 1/4 x 1/8 5/16 x 5/32 3/8 x 3/16
P2	3/4, 13/16, 7/8 15/16, 31/32, 1, 1 1/16, 1 1/8, 1 3/16, 1 1/4 1 5/16, 1 3/8 1 3/8, 1 7/16, 1 1/2, 1 9/16, 1 5/8, 1 11/16, 1 3/4	3/16 x 3/32 1/4 x 1/8 5/16 x 5/32 3/8 x 3/16
P3	1 1/8 1 3/8 1 5/8	1/4 x 1/8 5/16 x 5/32 3/8 x 3/16
B	1/2, 9/16 5/8, 11/16, 3/4, 13/16, 7/8 15/16, 1, 1 1/16, 1 1/8, 1 3/16, 1 1/4 1 5/16, 1 3/8 1 3/8, 1 7/16, 1 1/2, 1 9/16, 1 5/8, 1 11/16, 1 3/4 1 13/16, 1 7/8, 1 15/16, 2, 2 1/16, 2 1/8, 2 3/16, 2 1/4 2 5/16, 2 3/8, 2 7/16	1/8 x 1 1/16 3/16 x 3/32 1/4 x 1/8 5/16 x 5/32 3/8 x 5/32 1/2 x 1/4 5/8 x 5/16
Q1	3/4, 13/16, 7/8 15/16, 1, 1 1/16, 1 1/8, 1 3/16, 1 1/4 1 5/16, 1 3/8 1 7/16, 1 1/2, 1 9/16, 1 5/8, 1 11/16, 1 3/4 1 13/16, 1 7/8, 1 15/16, 2, 2 1/16, 2 1/8, 2 3/16, 2 1/4 2 5/16, 2 3/8, 2 7/16, 2 1/2, 2 9/16, 2 5/8, 2 11/16	3/16 x 3/32 1/4 x 1/8 5/16 x 5/32 3/8 x 5/32 1/2 x 1/4 5/8 x 5/16
Q2	1, 1 1/16, 1 1/8, 1 3/16, 1 1/4 1 5/16, 1 3/8 1 7/16, 1 1/2, 1 9/16, 1 5/8, 1 11/16, 1 3/4 1 13/16, 1 7/8, 1 15/16, 2, 2 1/16, 2 1/8, 2 3/16, 2 1/4 2 5/16, 2 3/8, 2 7/16, 2 1/2, 2 5/8, 2 11/16	1/4 x 1/8 5/16 x 5/32 3/8 x 3/16 1/2 x 1/4 5/8 x 5/16
Q3	1 5/16, 1 3/8 1 7/16, 1 1/2, 1 9/16, 1 5/8, 1 11/16, 1 3/4 1 13/16, 1 7/8, 1 15/16, 2, 2 1/16, 2 1/8, 2 3/16, 2 1/4 2 5/16, 2 3/8, 2 7/16, 2 1/2	5/16 x 5/32 3/8 x 3/16 1/2 x 1/4 5/8 x 5/16
R1	1 1/8, 1 3/16, 1 1/4, 1 5/16, 1 3/8 1 7/16, 1 1/2, 1 9/16, 1 5/8, 1 11/16, 1 3/4 1 13/16, 1 7/8, 1 15/16, 2, 2 1/16, 2 1/8, 2 3/16, 2 1/4 2 5/16, 2 3/8, 2 7/16, 2 1/2, 2 9/16, 2 5/8, 2 11/16, 2 3/4 2 13/16, 2 7/8, 2 15/16, 3, 3 1/8, 3 3/16, 3 1/4, 3 3/8, 3 7/16, 3 1/2, 3 5/8, 3 11/16, 3 3/4	1/4 x 1/8 5/16 x 5/32 3/8 x 3/16 1/2 x 1/4 5/8 x 5/16 3/4 x 3/8 7/8 x 7/16

## Split taper bushings bore & keyway - Inches

Bushing	Bore range	Keyway
R2	1 3/8 1 7/16, 1 1/2, 1 9/16, 1 5/8, 1 11/16, 1 3/4 1 13/16, 1 7/8, 1 15/16, 2, 2 1/16, 2 1/8, 2 3/16, 2 1/4 2 5/16, 2 3/8, 2 7/16, 2 1/2, 2 9/16, 2 5/8, 2 11/16, 2 3/4 2 13/16, 2 7/8, 2 15/16, 3, 3 1/8, 3 3/16, 3 1/4, 3 3/8, 3 7/16, 3 1/2, 3 5/8, 3 11/16, 3 3/4	5/16 x 5/32 3/8 x 3/16 1/2 x 1/4 5/8 x 5/16 3/4 x 3/8 7/8 x 7/16
S1	1 11/16, 1 3/4 1 7/8, 1 15/16, 2, 2 1/16, 2 1/8, 2 3/16, 2 1/4 2 5/16, 2 3/8, 2 7/16, 2 1/2, 2 9/16, 2 5/8, 2 11/16, 2 3/4 2 7/8, 2 15/16, 3, 3 1/8, 3 3/16, 3 1/4, 3 3/8, 3 7/16, 3 1/2, 3 5/8, 3 11/16, 3 3/4 3 7/8, 3 15/16, 4, 4 1/8, 4 3/16, 4 1/4	3/8 x 3/16 1/2 x 1/4 5/8 x 5/16 3/4 x 3/8 7/8 x 7/16 1 x 1/2
S2	1 7/8, 1 15/16, 2, 2 1/16, 2 1/8, 2 3/16, 2 1/4 2 5/16, 2 3/8, 2 7/16, 2 1/2, 2 9/16, 2 5/8, 2 11/16, 2 3/4 2 13/16, 2 7/8, 2 15/16, 3, 3 1/8, 3 3/16, 3 1/4, 3 3/8, 3 7/16, 3 1/2, 3 5/8, 3 11/16, 3 3/4 3 7/8, 3 15/16, 4, 4 1/8, 4 3/16	1/2 x 1/4 5/8 x 5/16 3/4 x 3/8 7/8 x 7/16 1 x 1/2
U0	2 7/8, 2 15/16, 3, 3 1/8, 3 3/16, 3 1/4, 3 3/8, 3 7/16, 3 1/2, 3 5/8, 3 11/16, 3 3/4 3 7/8, 3 15/16, 4, 4 1/8, 4 3/16, 4 1/4, 4 3/8, 4 7/16, 4 1/2 4 5/8, 4 11/16, 4 3/4, 4 7/8, 4 15/16, 5, 5 1/8, 5 3/16 5 1/4, 5 3/8, 5 7/16, 5 1/2	3/4 x 3/8 7/8 x 7/16 1 x 1/2 1 1/4 x 5/8 1 1/4 x 5/8
U1	2 7/8, 2 15/16, 3, 3 1/8, 3 3/16, 3 1/4, 3 3/8, 3 7/16, 3 1/2, 3 5/8, 3 11/16, 3 3/4 3 7/8, 3 15/16, 4, 4 1/8, 4 3/16, 4 1/4, 4 3/8, 4 7/16, 4 1/2 4 5/8, 4 11/16, 4 3/4, 4 7/8, 4 15/16, 5, 5 1/8, 5 3/16 5 1/4, 5 3/8, 5 7/16, 5 1/2	3/4 x 3/8 7/8 x 7/16 1 x 1/2 1 1/4 x 5/8 1 1/4 x 5/8
U2	2 7/8, 2 15/16, 3, 3 1/8, 3 3/16, 3 1/4, 3 3/8, 3 7/16, 3 1/2, 3 5/8, 3 11/16, 3 3/4 3 7/8, 3 15/16, 4, 4 1/8, 4 3/16, 4 1/4, 4 3/8, 4 7/16, 4 1/2 4 5/8, 4 11/16, 4 3/4, 4 7/8, 4 15/16, 5	3/4 x 3/8 7/8 x 7/16 1 x 1/2 1 1/4 x 5/8
W1	3 7/8, 3 15/16, 4, 4 1/8, 4 3/16, 4 1/4, 4 3/8, 4 7/16, 4 1/2 4 5/8, 4 11/16, 4 3/4, 4 7/8, 4 15/16, 5, 5 1/8, 5 3/16, 5 1/4, 5 3/8, 5 7/16, 5 1/2 5 5/8, 5 3/4, 5 7/8, 5 15/16, 6, 6 1/8, 6 3/16, 6 1/4, 6 3/8, 6 7/16, 6 1/2 6 5/8, 6 3/4, 6 7/8, 6 15/16, 7, 7 1/8, 7 3/16, 7 1/4, 7 3/8, 7 7/16	1 x 1/2 1 1/4 x 5/8 1 1/4 x 5/8 1 1/2 x 3/4 1 1/2 x 3/4 1 3/4 x 3/4 1 3/4 x 3/4
W2	3 7/8, 3 15/16, 4, 4 1/8, 4 3/16, 4 1/4, 4 3/8, 4 7/16, 4 1/2 4 5/8, 4 11/16, 4 3/4, 4 7/8, 4 15/16, 5, 5 1/8, 5 3/16, 5 1/4, 5 3/8, 5 7/16, 5 1/2 5 5/8, 5 3/4, 5 7/8, 5 15/16, 6, 6 1/8, 6 3/16, 6 1/4, 6 3/8, 6 7/16, 6 1/2 6 5/8, 6 3/4, 6 7/8, 6 15/16, 7, 7 1/8, 7 3/16, 7 1/4, 7 3/8, 7 7/16	1 x 1/2 1 1/4 x 5/8 1 1/4 x 5/8 1 1/2 x 3/4 1 1/2 x 3/4 1 3/4 x 3/4 1 3/4 x 3/4