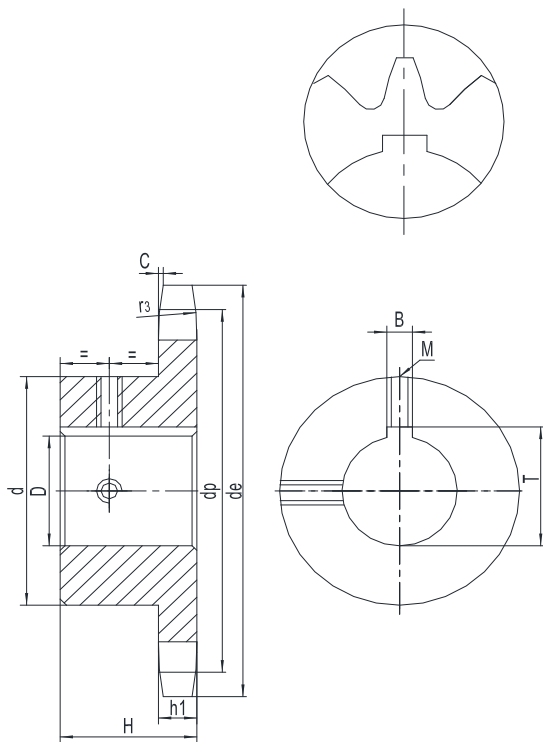




## Index

06B-1	Page 2
08B-1	Page 3. 4
10B-1	Page 5. 6
12B-1	Page 7. 8
16B-1	Page 9. 10
20B-1	Page 11

## Bore - Keyway - Screws

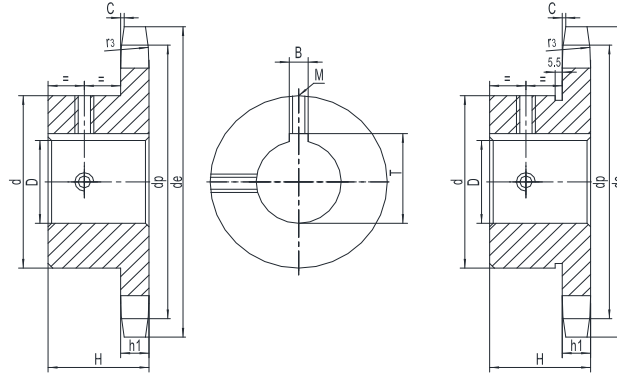


D(H7)	B(H9)	T	M
10	4	D+1.8 (+0.1/0)	M3
11	4	D+1.8 (+0.1/0)	M3
12	4	D+1.8 (+0.1/0)	M3
14	5	D+2.3 (+0.1/0)	M4
16	5	D+2.3 (+0.1/0)	M4
18	6	D+2.8 (+0.1/0)	M5
19	6	D+2.8 (+0.1/0)	M5
20	6	D+2.8 (+0.1/0)	M5
22	6	D+2.8 (+0.1/0)	M5
24	8	D+3.3 (+0.2/0)	M6
25	8	D+3.3 (+0.2/0)	M6
28	8	D+3.3 (+0.2/0)	M6
30	8	D+3.3 (+0.2/0)	M6
32	10	D+3.3 (+0.2/0)	M8
35	10	D+3.3 (+0.2/0)	M8
38	10	D+3.3 (+0.2/0)	M8
40	12	D+3.3 (+0.2/0)	M10
42	12	D+3.3 (+0.2/0)	M10
45	14	D+3.8 (+0.2/0)	M12
48	14	D+3.8 (+0.2/0)	M12
50	14	D+3.8 (+0.2/0)	M12
60	18	D+4.4 (+0.2/0)	M12
65	18	D+4.4 (+0.2/0)	M12
70	20	D+4.9 (+0.2/0)	M12

## 3/8" x 7/32"

Chain	mm
Pitch	9.525
Internal width	5.72
Roller $\Phi$	6.35

Sprockets	mm
Tooth radius $r_3$	10
Radius width C	1
Tooth width h1	5.3



### DIN 8187 ISO/R606

Z	D	H	d
10	10	22	24
	11		26
	12		29
	14		29
11	10	25	24
	12		26
	14		29*
	16		31*
12	10	25	25
	12		26
	14		29
	16		*31
13	10	25	28
	12		29
	14		31
	16		*35
	18		*35
14	12	25	31
	14		35
	16		35
	19		35
15	12	25	34
	14		35
	16		36
	18		38
	19		38
	20		*42
16	12	28	37
	14		37
	16		37
	18		37
	19		37
	20		37
	22		37
24	42		
25	42		

Z	D	H	d
17	12	28	40
	14		
	16		
	18		
	19		
	20		
	22		
	24		
18	25	28	43
	12		
	14		
	16		
	18		
	19		
19	22	28	45
	14		
	16		
	18		
	19		
	20		
	22		
20	24	28	46
	12		
	14		
	16		
	18		
	19		
21	25	28	48
	16		
	18		
	19		
20	42	28	57

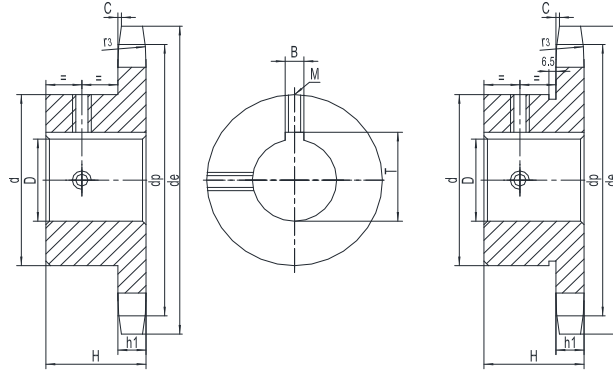
Z	D	H	d
21	22	28	48
	24		
	25		
22	16	28	50
	18		
	19		
	20		
	22		
	24		
23	25	28	52
	16		
	18		
	19		
	20		
24	22	28	54
	24		
	25		
	16		
	18		
25	19	28	57
	20		
	22		
	24		
	25		

Sprockets with finished bore, keyway, 2 screws, and hardening teeth.

## 1/2" x 5/16"

Chain	mm
Pitch	12.7
Internal width	7.75
Roller $\Phi$	8.51

Sprockets	mm
Tooth radius $r_3$	13
Radius width C	1.3
Tooth width $h_1$	7.2



### DIN 8187 ISO/R606

Z	D	H	d
10	12	25	26
	14		29
	16		31
11	12	25	29
	14		31
	16		34
	18		35
	19		35
12	12	28	33
	14		35
	16		36
	18		38
	19		41*
	20		42*
	22		
	24		
13	12	28	37
	14		
	16		
	18		
	19		
	20		
	22		42
14	12	28	41
	14		
	16		
	18		
	19		
	20		
	22		
	24		45
15	12	28	45
	14		
	16		
	18		
	18		

Z	D	H	d
15	19	28	45
	20		
	22		
	24		
	25		
	28		
	30		47
	32		49
16	16	28	50
	18		
	19		
	20		
	22		
	24		
	25		
	28		
	30		
	32		53
	17		16
18			
19			
20			
22			
24			
25			
28			
30			
32			
18		16	28
	18		
	19		
	20		
	22		
	24		
	25		
	28		
	30		
	32		
	38		
19	16	28	60

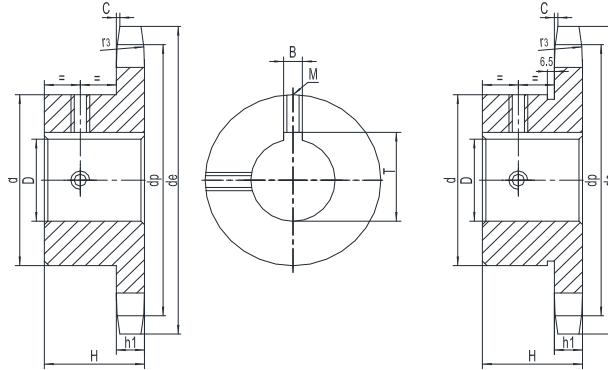
Z	D	H	d
19	18	28	60
	19		
	20		
	22		
	24		
	25		
	28		
	30		
	32		
	38		
20	16	28	64
	18		
	19		
	20		
	22		
	24		
	25		
	28		
	30		
	32		
	35		
21	16	28	68
	18		
	19		
	20		
	22		
	24		
	25		
	28		
	30		
	32		
22	16	28	70
	18		
	19		
	20		
	22		

Sprockets with finished bore, keyway, 2 screws, and hardening teeth.

## 1/2" x 5/16"

Chain	mm
Pitch	12.7
Internal width	7.75
Roller $\Phi$	8.51

Sprockets	mm
Tooth radius $r_3$	13
Radius width C	1.3
Tooth width h1	7.2



### DIN 8187 ISO/R606

Z	D	H	d
22	25	28	70
	28		
	30		
	32		
	35		
	38		
23	19	28	70
	20		
	22		
	24		
	25		
	28		
	30		
	32		
24	19	28	70
	20		
	22		
	24		
	25		
	28		
	30		
	32		

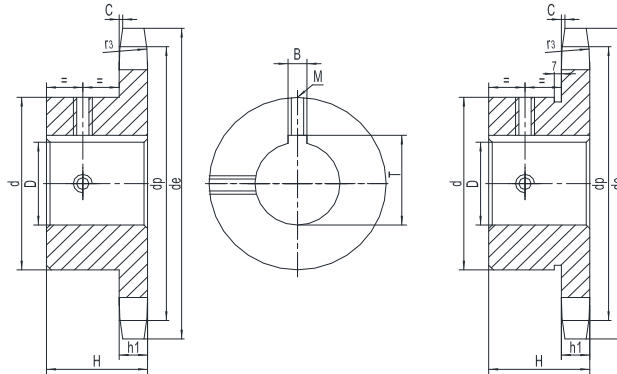
Z	D	H	d
25	19	28	70
	20		
	22		
	24		
	25		
	28		
	30		
	32		
	35		
38			

Sprockets with finished bore, keyway, 2 screws, and hardening teeth.

## 5/8" x 3/8"

Chain	mm
Pitch	15.875
Internal width	9.65
Roller $\Phi$	10.16

Sprockets	mm
Tooth radius $r_3$	16
Radius width C	1.6
Tooth width h1	9.1



### DIN 8187 ISO/R606

Z	D	H	d
10	16	25	35
	19		
	20		
	24		
11	16	30	37
	18		
	19		
	20		42
	24		
	25		
12	16	30	42
	18		
	19		
	20		
	24		44
	25		
	28		
	32		
13	16	30	47
	18		
	19		
	20		
	24		49
	25		
	28		
	32		
14	16	30	52
	18		
	19		
	20		
	24		
	25		
	28		
	30		
15	19	30	57
	20		
	22		

Z	D	H	d
15	24	30	57
	25		
	28		
	30		
	32		
	35		
16	19	30	60
	20		
	22		
	24		
	25		
	28		
	30		
	32		
17	19	30	60
	20		
	22		
	24		
	25		
	28		
	30		
	32		
18	19	30	70
	20		
	22		
	24		
	25		
	28		
	30		
	32		
	35		
	38		
19	19	30	70
	20		
	22		
	22		

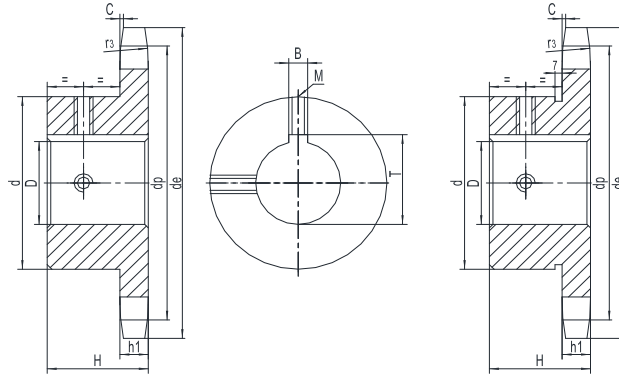
Z	D	H	d
19	24	30	70
	25		
	28		
	30		
	32		
	35		
	38		
	40		
20	19	30	75
	20		
	22		
	24		
	25		
	28		
	30		
	32		
	35		
	38		
21	19	30	75
	20		
	22		
	24		
	25		
	28		
	30		
	32		
	35		
	38		
22	19	30	80
	20		
	22		
	24		
	25		
	28		
	30		
	32		

Sprockets with finished bore, keyway, 2 screws, and hardening teeth.

## 5/8" x 3/8"

Chain	mm
Pitch	15.875
Internal width	9.65
Roller $\Phi$	10.16

Sprockets	mm
Tooth radius $r_3$	16
Radius width C	1.6
Tooth width h1	9.1



### DIN 8187 ISO/R606

Z	D	H	d
22	35	30	80
	38		
	40		
	42		
23	19	30	80
	20		
	22		
	24		
	25		
	28		
	30		
	32		
	35		
	38		
24	19	30	80
	20		
	22		
	24		
	25		
	28		
	30		
	32		
	35		
	38		
40			

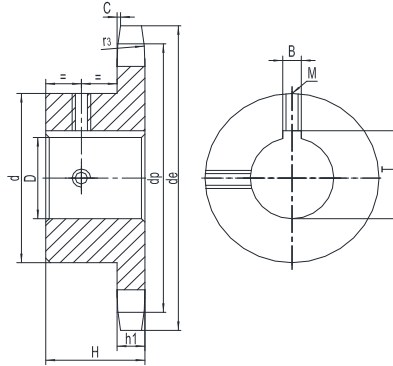
Z	D	H	d
24	42	30	80
25	19	30	80
	20		
	22		
	24		
	25		
	28		
	30		
	32		
	35		
	38		
40			
42			

Sprockets with finished bore, keyway, 2 screws, and hardening teeth.

## 3/4" x 7/16"

Chain	mm
Pitch	19.05
Internal width	11.68
Roller $\Phi$	12.07

Sprockets	mm
Tooth radius $r_3$	19
Radius width C	2
Tooth width h1	11.1



### DIN 8187 ISO/R606

Z	D	H	d
10	19	30	42
	20		
	24		
	25		
	28		
	30		
11	32	35	48
	19		
	20		
	24		
	25		
	28		
12	30	35	52
	32		
	19		
	20		
	22		
	24		
13	25	35	58
	28		
	30		
	32		
	35		
	38		
14	38	35	64
	19		
	20		
	22		
	24		
	25		

Z	D	H	d
14	35	35	64
	38		
	40		
15	19	35	70
	20		
	22		
	24		
	25		
	28		
	30		
	32		
	35		
	38		
16	40	35	75
	19		
	20		
	22		
	24		
	25		
	28		
	30		
	32		
	35		
17	38	35	80
	40		
	25		
	28		
	30		
	32		
	35		
	38		
18	42	35	80
	25		
	28		
	30		
	32		
	35		
	38		
	40		

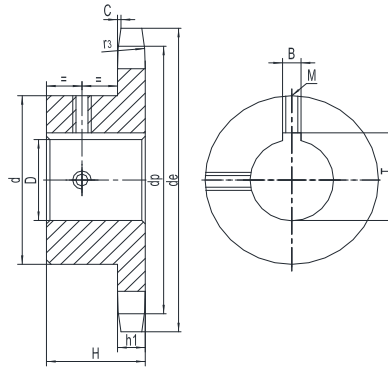
Z	D	H	d
19	25	35	80
	28		
	30		
	32		
	35		
	38		
	40		
	42		
20	45	35	80
	48		
	50		
	25		
	28		
	30		
	32		
	35		
21	38	35	90
	40		
	42		
	45		
	48		
	50		
	25		
	28		
22	30	40	90
	32		
	35		
	38		
	40		
	42		
	25		
	28		

Sprockets with finished bore, keyway, 2 screws, and hardening teeth.

## 3/4" x 7/16"

Chain	mm
Pitch	19.05
Internal width	11.68
Roller $\Phi$	12.07

Sprockets	mm
Tooth radius $r_3$	19
Radius width C	2
Tooth width h1	11.1



### DIN 8187 ISO/R606

Z	D	H	d
22	45	40	90
	48		
	50		
23	25	40	90
	28		
	30		
	32		
	35		
	38		
	40		
	42		
	45		
	48		
24	25	40	90
	28		
	30		
	32		
	35		
	38		
	40		
	42		
	45		
	48		
50			

Z	D	H	d
25	25	40	90
	28		
	30		
	32		
	35		
	38		
	40		
	42		
	45		
	48		
50			

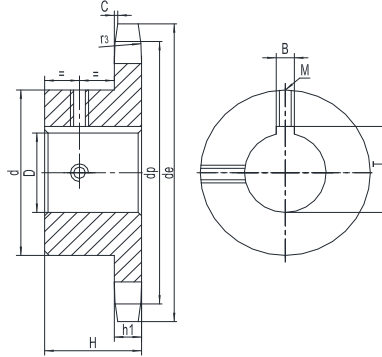
Sprockets with finished bore, keyway, 2 screws, and hardening teeth.



## 1" x 17.02 mm

Chain	mm
Pitch	25.40
Internal width	17.02
Roller $\Phi$	15.88

Sprockets	mm
Tooth radius $r_3$	26
Radius width C	2.5
Tooth width h1	16.2



### DIN 8187 ISO/R606

Z	D	H	d
11	25	40	61
	28		
	30		
	32		
	35		
	38		
	40		
12	42	40	69
	25		
	28		
	30		
	32		
	35		
13	38	40	78
	40		
	42		
	45		
	48		
	50		
	82		
	14		
28			
30			
32			
35			
38			
40			
42			
45			
15	48	40	92
	50		
	25		
	28		
	30		

Z	D	H	d
15	32	40	92
	35		
	38		
	40		
	42		
	45		
	48		
	50		
16	25	45	100
	28		
	30		
	32		
	35		
	38		
	40		
	42		
17	45	45	100
	48		
	50		
	25		
	28		
	30		
	32		
	35		
18	38	45	100
	40		
	42		
	45		
	48		
	50		
	25		
	28		

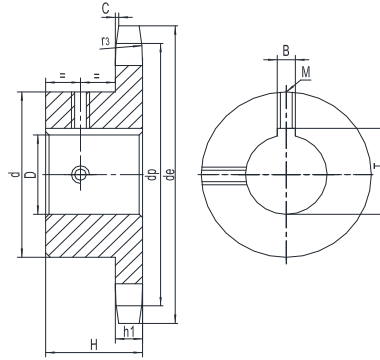
Z	D	H	d
19	25	45	100
	28		
	30		
	32		
	35		
	38		
	40		
	42		
20	45	45	100
	48		
	50		
	25		
	28		
	30		
	32		
	35		
21	38	45	110
	40		
	42		
	45		
	48		
	50		
	25		
	28		
22	30	50	110
	32		
	35		
	38		
	40		
	42		

Sprockets with finished bore, keyway, 2 screws, and hardening teeth.

## 1" x 17.02 mm

Chain	mm
Pitch	25.40
Internal width	17.02
Roller $\Phi$	15.88

Sprockets	mm
Tooth radius $r_3$	26
Radius width C	2.5
Tooth width h1	16.2



### DIN 8187 ISO/R606

Z	D	H	d
22	45	50	110
	48		
	50		
23	25	50	110
	28		
	30		
	32		
	35		
	38		
	40		
	42		
	45		
	48		
24	25	50	110
	28		
	30		
	32		
	35		
	38		
	40		
	42		
	45		
	48		
50			

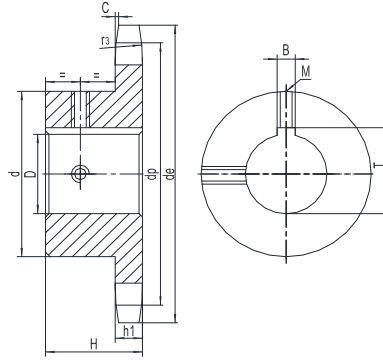
Z	D	H	d
25	25	50	110
	28		
	30		
	32		
	35		
	38		
	40		
	42		
	45		
	48		
50			

Sprockets with finished bore, keyway, 2 screws, and hardening teeth.

## 1.1/4" x 3/4"

Chain	mm
Pitch	31.75
Internal width	19.56
Roller $\Phi$	19.05

Sprockets	mm
Tooth radius $r_3$	32
Radius width C	3.5
Tooth width h1	18.5



### DIN 8187 ISO/R606

Z	D	H	d
9	25	40	63
	30		
	32		
	35		
	38		
10	25	40	70
	30		
	32		
	35		
	38		
11	25	45	77
	28		
	30		
	32		
	35		
	38		
	40		
	42		
	45		82
	60		93
12	25	45	88
	28		
	30		
	32		
	35		
	38		
	40		
	42		
	45		93
	60		
13	25	45	98
	28		
	30		
	32		
	35		
	38		
	40		
42			

Z	D	H	d
13	45	45	98
	48		
	50		
	60		
	32		
14	32	45	108
	35		
	38		
	40		
	42		
	45		
	48		
15	32	45	118
	35		
	38		
	40		
	42		
	45		
	48		
	50		
	60		
	16		
40			
42			
45			
48			
50			
60			
65			
70			
17		38	50
	40		
	42		
	45		
	48		
	50		
	60		
	70		

Z	D	H	d
18	38	50	120
	40		
	42		
	45		
	48		
	50		
	60		
19	38	50	120
	40		
	42		
	45		
	48		
	50		
	60		
20	38	50	120
	40		
	42		
	45		
	48		
	50		
	60		
70			

Sprockets with finished bore, keyway, 2 screws, and hardening teeth.