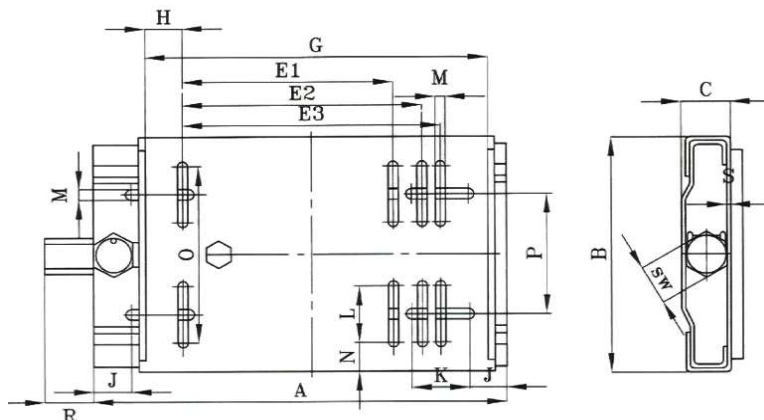


Type SMA / Dimensions (mm)

Type	A	B	C	CH	D	E	F	G	H	L	M	N	O	P	Q	Weight Kg
SMA210	210	195	20	19	25	50	25	10.5	33	70	43	50	26	98	3	2.6
SMA270	270	195	20	19	25	50	25	10.5	33	70	43	50	26	98	3	3.0
SMA307	307	213	20	19	25	50	25	10.5	33	70	65	50	24	108	3	3.2
SMA340	340	290	27	22	30	62	30	12.5	40	95	90	62	38	165	4	6.3
SMA380	380	240	27	19	25	43	30	12.0	33	95	96	43	29	160	3	4.5
SMA430	430	290	27	22	30	62	30	12.5	40	95	90	62	38	165	4	7.5
SMA450	450	350	40	22	30	55	30	15.0	40	125	174	55	33	225	4	9.7
SMA490	490	410	40	22	30	60	30	15.0	40	95	193	60	48.5	284	4	10.8

Material: Steel

Surface treatment: Zinc plated

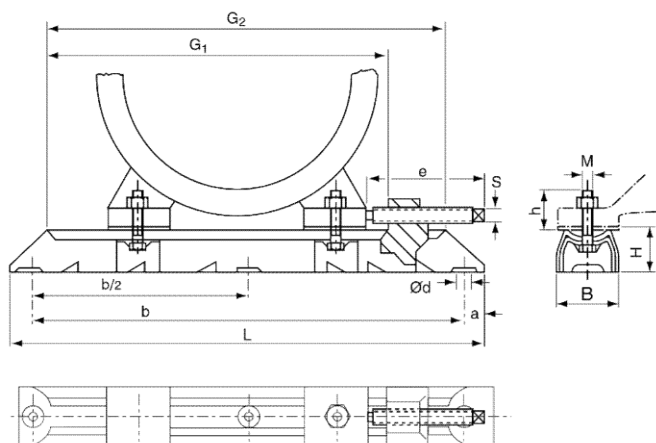


Type MP / Dimensions (mm)

Type	Motor Size	A	B	C	E1	E2	E3	G	H	J	K	L	M	O	P	R	Weight kg
63/90	63-71-80-90	270	195	33	100	125	140	190	25	25	50	50	10.5	132	98	25	3.1
90/112	90-100-112	307	213	33	140	160	190	255	32.5	25	50	50	10.5	162	108	25	4.1
100/132-2	100-112-132	340	290	40	160	190	216	286	35	30	62	48	12.5	215	165	30	7.9
100/132	100-112-132	430	290	40	160	190	216	286	35	30	62	48	12.5	215	165	30	8.9
160/180-2	160-180	430	370	40		254	279	379	50	30	62	62	12.5	287	248	30	12
160/180	160-180	490	370	40		254	279	379	50	30	62	62	12.5	287	248	30	12.7
180/200	180-200	490	410	40		279	318	420	50	30	60	52	17	329	285	30	14.6
200/225	200-225	585	450	50		318	356	468	56	30	60	52	17	352	300	30	23.7
250*	250	600	470	65			406	515	54.5	30	60	60	22	369	320	35	28.1
280*	280	735	570	65			457	585	64	30	70	70	22	460	420	35	38.2

Material: Steel

Surface treatment: Zinc plated



Rails size	Motor size	G1 mm	G2 mm	B mm	H mm	a mm	b mm	b/2 mm	ød mm	M x h mm	e x s mm	Weight kg
312/6	63/71	240	262	40	28	16	280	*	12	M6 x 19	75 x 6	1.40
312/8	80/90	240	262	40	28	16	280	*	12	M8 x 27	75 x 6	1.50
375/6	63/71	305	325	40	28	16	343	*	12	M6 x 19	75 x 6	1.50
375/8	80/90	305	325	40	28	16	343	*	12	M8 x 27	75 x 6	1.60
375/10	100/112	305	325	40	28	16	343	*	12	M10 x 32	75 x 6	1.60
395/8	80/90	302	325	50	40	20	355	*	12	M8 x 28	97 x 8	3.40
395/10	100/112	302	325	50	40	20	355	*	12	M10 x 35	97 x 8	3.40
495/8	80/90	405	425	50	40	20	455	*	12	M8 x 29	97 x 8	4.00
495/10	100/112/132	405	425	50	40	20	455	*	12	M10 x 35	97 x 8	4.00
495/12	160	405	425	50	40	20	455	*	12	M12 x 49	97 x 8	4.00
530/10	132	413	442	60	50	25	480	*	14	M10 x 37	119 x 9	6.40
530/12	160	413	442	60	50	25	480	*	14	M12 x 49	119 x 9	6.40
630/10	132	515	542	60	50	25	580	*	14	M10 x 37	119 x 9	8.20
630/12	160/180	515	542	60	50	25	580	*	14	M12 x 45	119 x 9	8.20
686/12	160/180	538	575	75	60	25	630	315	15	M12 x 43	154 x 12	12.80
686/16	200/225	538	575	75	60	28	630	315	18	M16 x 62	154 x 12	12.80
864/16	200/225	700	810	90	75	32	800	400	24	M16 x 60	300 x 16	16.60
864/20	250/280	700	810	90	75	32	800	400	24	M20 x 68	300 x 16	16.60
1072/20	250/280	865	995	112	100	36	1,000	500	30	M20 x 77	360 x 19	33.40
1072/24	315	865	995	112	100	36	1,000	500	30	M24 x 88	360 x 19	33.40
1072/24	315/355	1065	1215	130	125	40	1,250	625	30	M24 x 95	430 x 21	56.60

Material: Steel

Surface treatment: Zinc plated