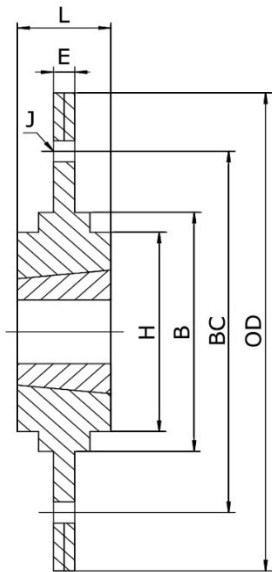


Bolt-on Hubs





Material selection: Cast Iron GG25
Surface treatment: Black phosphating

Dimensions (mm)

Type	Bush No.	OD	H	B	BC	E	L	J
SM12	1210	180	75	90	135	6.5	25	6 x Ø7.5
SM16-1	1610	200	85	110	150	7.5	25	6 x Ø7.5
SM16-2	1615	200	85	110	150	7.5	38	6 x Ø7.5
SM20	2012	270	110	140	190	8.5	32	6 x Ø9.5
SM25	2517	340	125	170	240	9.5	45	8 x Ø11.5
SM30-1	3020	430	160	220	300	13.5	51	8 x Ø13.5
SM30-2	3020	485	160	250	340	14.0	51	8 x Ø13.5

Matched Taper Bush

SM12

Matched Taper Bush 1210
Bore size option (mm): 11, 12, 14, 16, 18, 19, 20, 22, 24, 25, 28, 30, 32

SM20

Matched Taper Bush 2012
Bore size option (mm): 18, 19, 20, 22, 24, 25, 28, 30, 32, 35, 38, 40, 42, 45, 48, 50

SM30-1 & SM30-2

Matched Taper Bush 3020
Bore size option (mm): 25, 28, 30, 32, 35, 38, 40, 42, 45, 48, 50, 55, 60, 65, 70, 75

SM16-1 & SM16-2

Matched Taper Bush 1610 & 1615
Bore size option (mm): 14, 16, 18, 19, 20, 22, 24, 25, 28, 30, 32, 35, 38, 40, 42

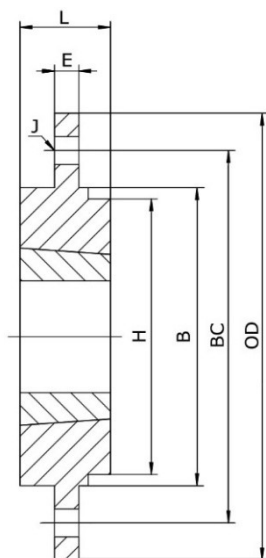
SM25

Matched Taper Bush 2517
Bore size option (mm): 20, 22, 24, 25, 28, 30, 32, 35, 38, 40, 42, 45, 48, 50, 55, 60

Application:

HVAC system, Ventilation System, Fan industry
Rotors, Agitators.





Material selection: Cast Iron GG25
Surface treatment: Black phosphating

Dimensions (mm)

Type	Bush No.	OD	H	B	BC	E	L	J
BF12	1210	120	74	80	100	6.5	25	6 x Ø6.6
BF16	1610	130	84	90	110	6.5	25	6 x Ø6.6
BF20	2012	145	99	100	125	8.5	32	6 x Ø9.0
BF25	2517	185	120	130	155	11.5	44	6 x Ø11.0
BF30	3020	220	146	165	190	11.5	50	6 x Ø13.0

Matched Taper Bush

BF12

Matched Taper Bush 1210
Bore size option (mm): 11, 12, 14, 16, 18, 19, 20, 22, 24, 25, 28, 30, 32

BF20

Matched Taper Bush 2012
Bore size option (mm): 18, 19, 20, 22, 24, 25, 28, 30, 32, 35, 38, 40, 42, 45, 48, 50

BF30

Matched Taper Bush 3020
Bore size option (mm): 25, 28, 30, 32, 35, 38, 40, 42, 45, 48, 50, 55, 60, 65, 70, 75

BF16

Matched Taper Bush 1610 & 1615
Bore size option (mm): 14, 16, 18, 19, 20, 22, 24, 25, 28, 30, 32, 35, 38, 40, 42

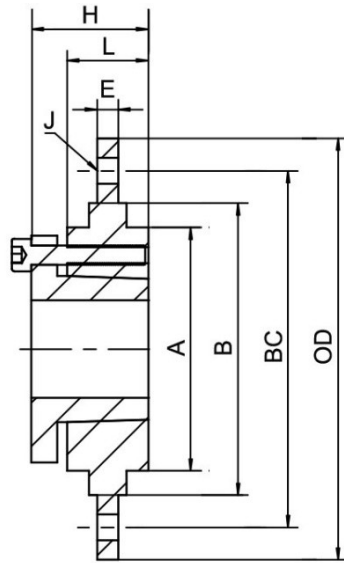
BF25

Matched Taper Bush 2517
Bore size option (mm): 20, 22, 24, 25, 28, 30, 32, 35, 38, 40, 42, 45, 48, 50, 55, 60

Application :

HVAC system, Ventilation System, Fan industry Rotors, Agitators.





Material selection: Cast Iron, Steel, Aluminum

Dimensions (mm)

Type	Bush No.	OD	A	B	BC	E	L	H	J
SMQ12	SH	180	75	90	135	6.5	23	36	6 x Ø7.5
SMQ16	SD	200	85	110	150	7.5	32	50	6 x Ø7.5
SMQ20	SK	270	100	140	190	8.5	32	55	6 x Ø9.5
SMQ25	SF	340	125	170	240	9.5	44	58	8 x Ø11.5
SMQ30-1	E	430	160	220	300	13.5	51	72	8 x Ø13.5
SMQ30-2	E	485	160	250	340	14.0	51	72	8 x Ø13.5

Matched QD Bushings

SH

Bore size (mm): 19, 20, 22, 24, 25, 28, 30, 32, 35, 38

SD

Bore size (mm): 22, 24, 25, 28, 30, 32, 35, 38, 40, 42, 45, 48

SK

Bore size (mm): 28, 30, 32, 35, 38, 40, 42, 45, 48, 50, 55, 60

SF

Bore size (mm): 28, 30, 32, 35, 38, 40, 42, 45, 48, 50, 55, 60, 65, 70

E

Bore size (mm): 32, 35, 38, 40, 42, 45, 48, 50, 55, 60, 65, 70, 75, 80, 85

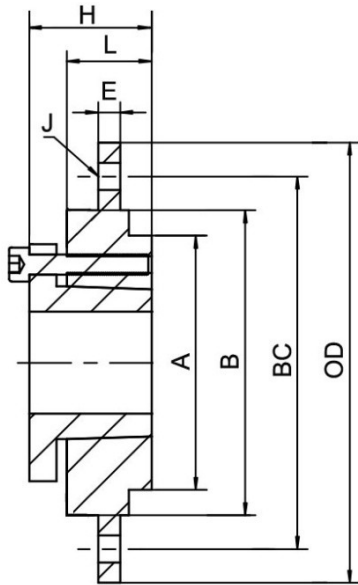
Application:

HVAC system, Ventilation system, Fan industry, Rotors, Agitators.

Advantages:

Large torque, high security and stability.





Material selection: Cast Iron, Steel, Aluminum

Dimensions (mm)

Type	Bush No.	OD	A	B	BC	E	L	H	J
BFQ12	SH	120	74	80	100	6.5	25	36	6 x Ø6.6
BFQ16	SD	130	84	90	110	6.5	25	50	6 x Ø6.6
BFQ20	SK	145	99	100	125	8.5	32	55	6 x Ø9.0
BFQ25	SF	185	120	130	155	11.5	44	58	6 x Ø11.0
BFQ30	E	220	146	165	190	11.5	51	72	6 x Ø13.0

Matched QD Bushings

SH

Bore size (mm): 19, 20, 22, 24, 25, 28, 30, 32, 35, 38

SD

Bore size (mm): 22, 24, 25, 28, 30, 32, 35, 38, 40, 42, 45, 48

SK

Bore size (mm): 28, 30, 32, 35, 38, 40, 42, 45, 48, 50, 55, 60

SF

Bore size (mm): 28, 30, 32, 35, 38, 40, 42, 45, 48, 50, 55, 60, 65, 70

E

Bore size (mm): 32, 35, 38, 40, 42, 45, 48, 50, 55, 60, 65, 70, 75, 80, 85

Application:

HVAC system, Ventilation system, Fan industry, Rotors, Agitators.

Advantages:

Large torque, high security and stability.

