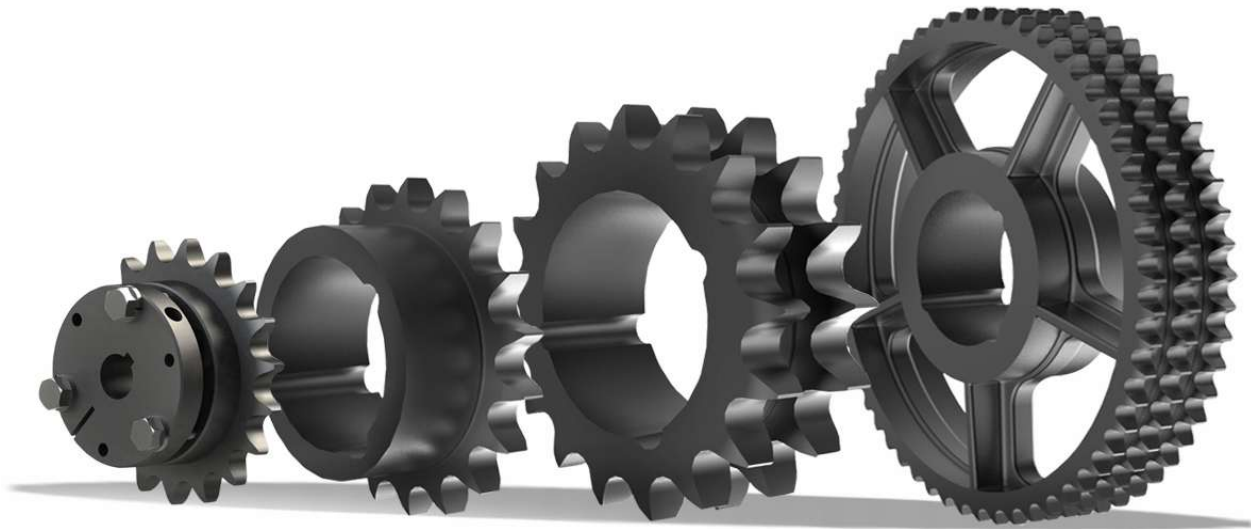


Sprockets

DIN8187-ISO/R606



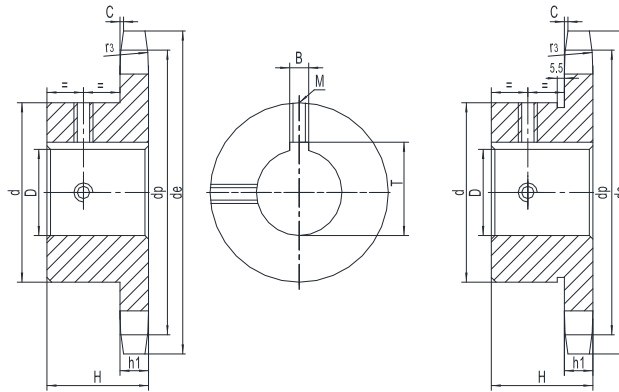
06B-1 Finished bore Sprockets



3/8" x 7/32"

Chain	mm
Pitch	9.525
Internal width	5.72
Roller Φ	6.35

Sprockets	mm
Tooth radius r_3	10
Radius width C	1
Tooth width h1	5.3



DIN 8187 ISO/R606

Z	D	H	d
10	10	22	24
	11		26
	12		29
	14		29
11	10	25	24
	12		26
	14		29*
	16		31*
12	10	25	25
	12		26
	14		29
	16		*31
13	10	25	28
	12		29
	14		31
	16		*35
	18		35
14	12	25	31
	14		35
	16		34
	18		35
15	12	25	34
	14		35
	16		36
	18		38
	19		*42
	20		38
	22		38
16	12	28	37
	14		37
	16		37
	18		37
	19		37
	20		37
	22		37
	24		37
25	42		

Z	D	H	d
17	12	28	40
	14		40
	16		40
	18		40
	19		40
	20		40
	22		40
	24		40
18	12	28	42
	14		42
	16		42
	18		42
	19		42
	20		42
	22		42
19	12	28	45
	14		45
	16		45
	18		45
	19		45
	20		45
	22		45
	24		45
20	12	28	46
	14		46
	16		46
	18		46
	19		46
	20		46
	22		46
21	16	28	48
	18		48
	19		48
	20		48

Z	D	H	d
21	22	28	48
	24		48
	25		48
22	16	28	50
	18		50
	19		50
	20		50
	22		50
	24		50
	25		50
23	16	28	52
	18		52
	19		52
	20		52
	22		52
	24		52
24	16	28	54
	18		54
	19		54
	20		54
	22		54
25	16	28	57
	18		57
	19		57
	20		57
	22		57
	24		57

Sprockets with finished bore, keyway, 2 screws, and hardening teeth.

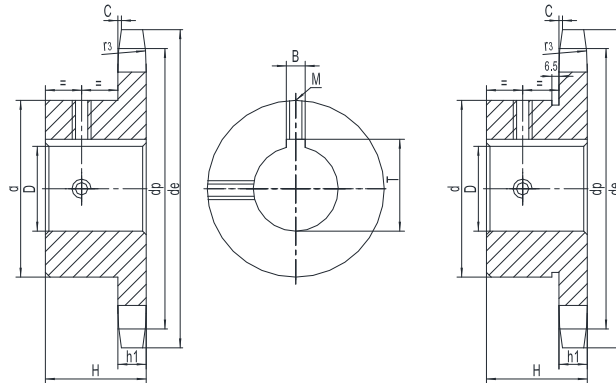
08B-1 Finished bore Sprockets



1/2" x 5/16"

Chain	mm
Pitch	12.7
Internal width	7.75
Roller Φ	8.51

Sprockets	mm
Tooth radius r_3	13
Radius width C	1.3
Tooth width h1	7.2



DIN 8187 ISO/R606

Z	D	H	d
10	12	25	26
	14		29
	16		31
11	12	25	29
	14		31
	16		34
	18		35
	19		35
12	12	28	33
	14		35
	16		36
	18		38
	19		41*
	20		42*
	22		
	24		
13	12	28	37
	14		
	16		
	18		
	19		
	20		
	22		42
	24		45*
14	12	28	41
	14		
	16		
	18		
	19		
	20		
	22		
	24		
	25		
	28		45
15	12	28	45
	14		
	16		
	18		
	18		

Z	D	H	d		
15	19	28	45		
	20				
	22				
	24				
	25				
	28				
	30		47		
	32		49		
16	16	28	50		
	18				
	19				
	20				
	22				
	24				
	25				
	28				
	30				
	32		53		
	17		16	28	52
			18		
19					
20					
22					
24					
25					
28					
30					
32					
18		16	28		56
		18			
	19				
	20				
	22				
	24				
	25				
	28				
	30				
	32				
	35				
	38				
19	16	28	60		

Z	D	H	d
19	18	28	60
	19		
	20		
	22		
	24		
	25		
	28		
	30		
	32		
	35		
	38		
	20		16
18			
19			
20			
22			
24			
25			
28			
30			
32			
35			
38			
21	16	28	68
	18		
	19		
	20		
	22		
	24		
	25		
	28		
	30		
	32		
	35		
	38		
22	16	28	70
	18		
	19		
	20		
	22		

Sprockets with finished bore, keyway, 2 screws, and hardening teeth.

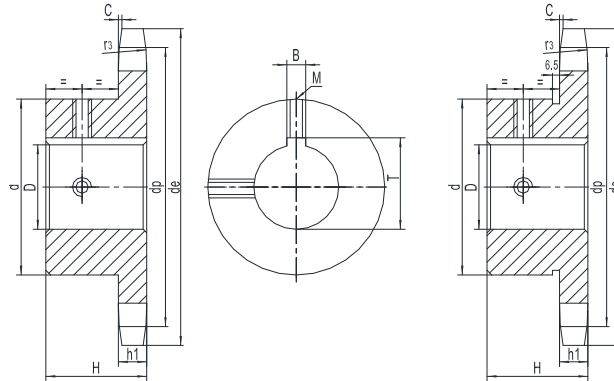
1/2" x 5/16"

Chain mm

Pitch	12.7
Internal width	7.75
Roller Φ	8.51

Sprockets mm

Tooth radius r_3	13
Radius width C	1.3
Tooth width h1	7.2



DIN 8187 ISO/R606

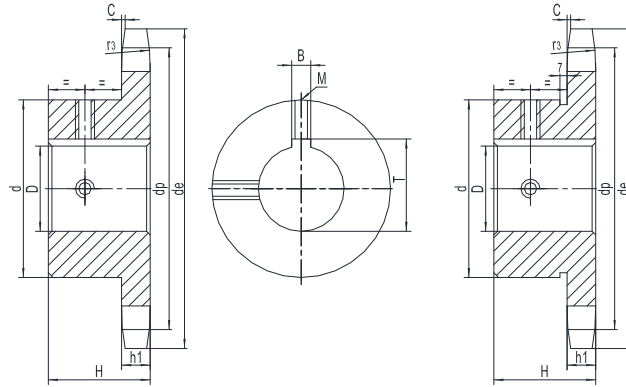
Z	D	H	d
22	25	28	70
	28		
	30		
	32		
	35		
	38		
23	19	28	70
	20		
	22		
	24		
	25		
	28		
	30		
	32		
24	19	28	70
	20		
	22		
	24		
	25		
	28		
	30		
	32		
	35		
	38		

Z	D	H	d
25	19	28	70
	20		
	22		
	24		
	25		
	28		
	30		
	32		
26	35	28	70
	38		
	40		
	42		

Sprockets with finished bore, keyway, 2 screws, and hardening teeth.

5/8" x 3/8"

Chain	mm
Pitch	15.875
Internal width	9.65
Roller Φ	10.16
Sprockets	mm
Tooth radius r_3	16
Radius width C	1.6
Tooth width h1	9.1



DIN 8187 ISO/R606

Z	D	H	d
10	16	25	35
	19		
	20		
	24		
11	16	30	37
	18		
	19		
	20		42
	24		
	25		
12	28	30	45
	16		
	18		
	19		42
	20		
	24		
	25		
28			
13	30	30	49
	32		
	16		47
	18		
	19		
	20		
	24		
25			
14	28	30	52
	30		
	32		
	16		30
	18		
	19		
	20		
24			
25			
15	19	30	57
	20		
	22		

Z	D	H	d		
15	24	30	57		
	25				
	28				
	30				
	32				
	35				
16	19	30	60		
	20				
	22				
	24				
	25				
	28				
	30				
	32				
	35				
	38				
17	19	30	60		
	20				
	22				
	24				
	25				
	28				
	30				
	32				
18	35	30	70		
	38				
	40				
	42				
	19			30	70
	20				
	22				
	24				
	25				
	28				
30					
32					
35					
19	19	30	70		
	20				
	22				
	22				

Z	D	H	d
19	24	30	70
	25		
	28		
	30		
	32		
	35		
	38		
	40		
20	42	30	75
	19		
	20		
	22		
	24		
	25		
	28		
	30		
	32		
	35		
21	38	30	75
	40		
	42		
	19		
	20		
	22		
	24		
	25		
22	28	30	80
	30		
	32		
	19		
	20		
	22		

Sprockets with finished bore, keyway, 2 screws, and hardening teeth.

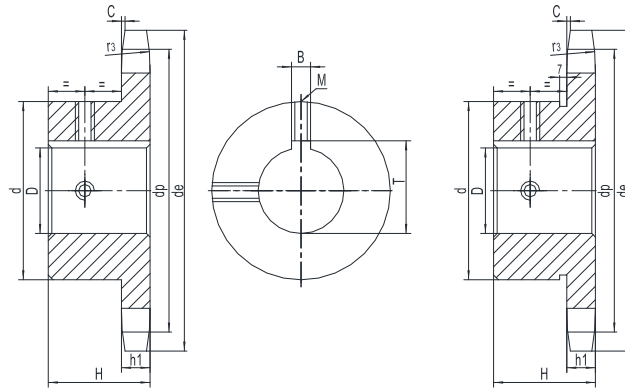
5/8" x 3/8"

Chain mm

Pitch	15.875
Internal width	9.65
Roller Φ	10.16

Sprockets mm

Tooth radius r_3	16
Radius width C	1.6
Tooth width h1	9.1



DIN 8187 ISO/R606

Z	D	H	d
22	35	30	80
	38		
	40		
	42		
23	19	30	80
	20		
	22		
	24		
	25		
	28		
	30		
	32		
	35		
	38		
	40		
24	19	30	80
	20		
	22		
	24		
	25		
	28		
	30		
	32		
	35		
	38		
40			

Z	D	H	d
24	42	30	80
25	19	30	80
	20		
	22		
	24		
	25		
	28		
	30		
	32		
	35		
	38		
	40		
42			

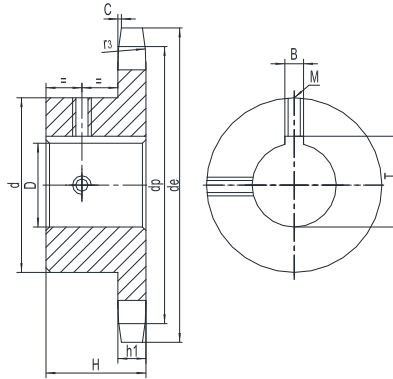
Sprockets with finished bore, keyway, 2 screws, and hardening teeth.

12B-1 Finished bore Sprockets

3/4" x 7/16"

Chain	mm
Pitch	19.05
Internal width	11.68
Roller Φ	12.07

Sprockets	mm
Tooth radius r_3	19
Radius width C	2
Tooth width h1	11.1



DIN 8187 ISO/R606

Z	D	H	d
10	19	30	42
	20		
	24		
	25		
	28		
	30		
11	19	35	48
	20		
	24		
	25		
	28		
	30		
12	19	35	52
	20		
	22		
	24		
	25		
	28		
13	19	35	58
	20		
	22		
	24		
	25		
	28		
14	19	35	64
	20		
	22		
	24		
	25		
	28		
15	19	35	70
	20		
	22		
	24		
	25		
	28		
16	19	35	75
	20		
	22		
	24		
	25		
	28		
17	19	35	80
	20		
	22		
	24		
	25		
	28		
18	19	35	80
	20		
	22		
	24		
	25		
	28		
19	19	35	80
	20		
	22		
	24		
	25		
	28		
20	19	35	80
	20		
	22		
	24		
	25		
	28		
21	19	35	90
	20		
	22		
	24		
	25		
	28		
22	19	40	90
	20		
	22		
	24		
	25		
	28		

Z	D	H	d
14	35	35	64
	38		
	40		
	42		
15	19	35	70
	20		
	22		
	24		
	25		
	28		
	30		
	32		
	35		
	38		
16	19	35	75
	20		
	22		
	24		
	25		
	28		
	30		
	32		
	35		
	38		
17	19	35	80
	20		
	22		
	24		
	25		
	28		
	30		
	32		
	35		
	38		
18	19	35	80
	20		
	22		
	24		
	25		
	28		
	30		
	32		
	35		
	38		
19	19	35	80
	20		
	22		
	24		
	25		
	28		
20	19	35	80
	20		
	22		
	24		
	25		
	28		
21	19	35	90
	20		
	22		
	24		
	25		
	28		
22	19	40	90
	20		
	22		
	24		
	25		
	28		

Z	D	H	d
19	25	35	80
	28		
	30		
	32		
	35		
	38		
20	25	35	80
	28		
	30		
	32		
	35		
	38		
21	25	35	90
	28		
	30		
	32		
	35		
	38		
22	25	40	90
	28		
	30		
	32		
	35		
	38		
23	25	40	90
	28		
	30		
	32		
	35		
	38		

Sprockets with finished bore, keyway, 2 screws, and hardening teeth.

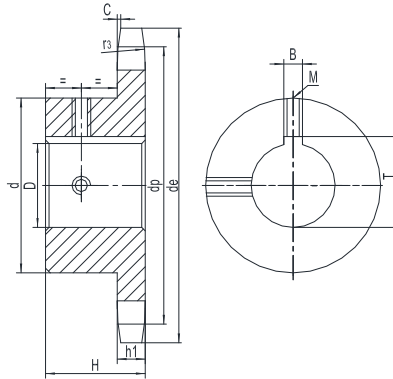
3/4" x 7/16"

Chain mm

Pitch	19.05
Internal width	11.68
Roller Φ	12.07

Sprockets mm

Tooth radius r_3	19
Radius width C	2
Tooth width h1	11.1



DIN 8187 ISO/R606

Z	D	H	d
22	45	40	90
	48		
	50		
23	25	40	90
	28		
	30		
	32		
	35		
	38		
	40		
	42		
	45		
	48		
24	25	40	90
	28		
	30		
	32		
	35		
	38		
	40		
	42		
	45		
	48		
50			

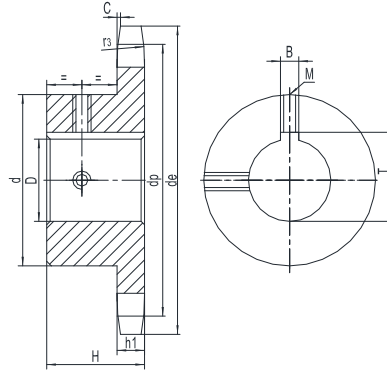
Z	D	H	d
25	25	40	90
	28		
	30		
	32		
	35		
	38		
	40		
	42		
	45		
	48		
50			

Sprockets with finished bore, keyway, 2 screws, and hardening teeth.

1" x 17.02 mm

Chain	mm
Pitch	25.40
Internal width	17.02
Roller Φ	15.88

Sprockets	mm
Tooth radius r_3	26
Radius width C	2.5
Tooth width h1	16.2



DIN 8187 ISO/R606

Z	D	H	d		
11	25	40	61		
	28				
	30				
	32				
	35				
	38				
	40				
12	42	40	69		
	25				
	28				
	30				
	32				
	35				
13	38	40	78		
	40				
	42				
	45				
	48				
	50				
	25			40	84
	28				
30					
32					
35					
38					
40					
42					
14	45	40	84		
	48				
	50				
	25			40	92
	28				
30					
30					

Z	D	H	d			
15	32	40	92			
	35					
	38					
	40					
	42					
	45					
	48					
	50					
	16			25	45	100
				28		
30						
32						
35						
38						
40						
42						
45						
48						
17	50	45	100			
	25					
	28					
	30					
	32					
	35					
	38					
	40					
	42					
	45					
18	48	45	100			
	50					
	25					
	28					
	30					
	32					
	35					
	38					
	40					
	42					

Z	D	H	d
19	25	45	100
	28		
	30		
	32		
	35		
	38		
	40		
	42		
	45		
	48		
20	50	45	100
	25		
	28		
	30		
	32		
	35		
	38		
	40		
	42		
	45		
21	48	45	110
	50		
	25		
	28		
	30		
	32		
	35		
	38		
	40		
	42		
22	45	50	110
	48		
	50		
	25		
	28		
	30		
32			
35			
38			
40			
42			

Sprockets with finished bore, keyway, 2 screws, and hardening teeth.

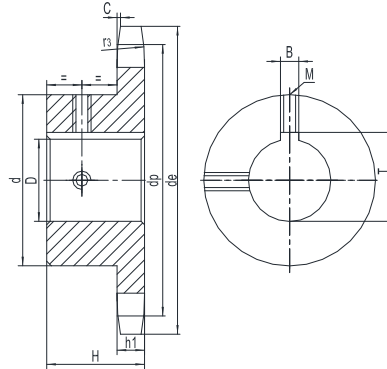
1" x 17.02 mm

Chain mm

Pitch	25.40
Internal width	17.02
Roller Φ	15.88

Sprockets mm

Tooth radius r_3	26
Radius width C	2.5
Tooth width h1	16.2



DIN 8187 ISO/R606

Z	D	H	d
22	45	50	110
	48		
	50		
23	25	50	110
	28		
	30		
	32		
	35		
	38		
	40		
	42		
	45		
	48		
24	25	50	110
	28		
	30		
	32		
	35		
	38		
	40		
	42		
	45		
	48		
50			

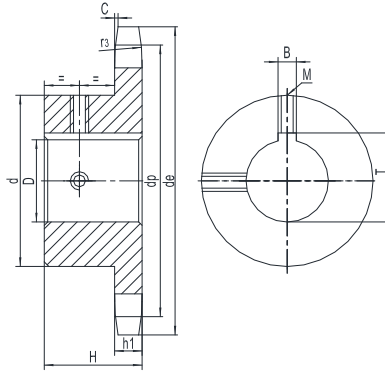
Z	D	H	d
25	25	50	110
	28		
	30		
	32		
	35		
	38		
	40		
	42		
	45		
	48		
	50		

Sprockets with finished bore, keyway, 2 screws, and hardening teeth.

1.1/4" x 3/4"

Chain	mm
Pitch	31.75
Internal width	19.56
Roller Φ	19.05

Sprockets	mm
Tooth radius r_3	32
Radius width C	3.5
Tooth width h1	18.5



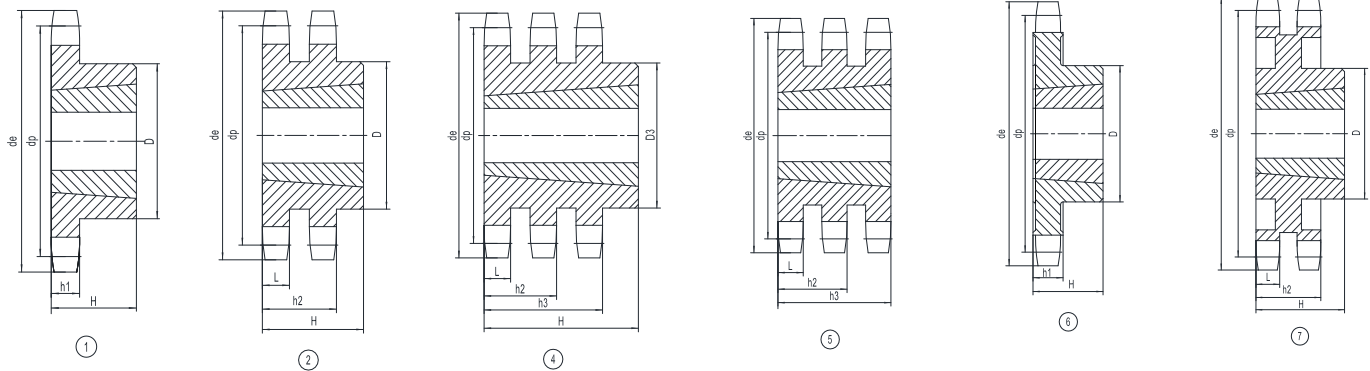
DIN 8187 ISO/R606

Z	D	H	d
9	25	40	63
	30		
	32		
	35		
	38		
10	25	40	70
	30		
	32		
	35		
	38		
11	25	45	77
	28		
	30		
	32		
	35		
	38		
	40		
	42		
	45		82
	50		
60	93		
12	25	45	88
	28		
	30		
	32		
	35		
	38		
	40		
	42		
	45		
	50		
	60		93
13	25	45	98
	28		
	30		
	32		
	35		
	38		
	40		
42			

Z	D	H	d
13	45	45	98
	48		
	50		
	60		
	60		
14	32	45	108
	35		
	38		
	40		
	42		
	45		
	48		
15	32	45	118
	35		
	38		
	40		
	42		
	45		
	48		
	50		
	60		
	60		
16	38	50	120
	40		
	42		
	45		
	48		
	50		
	60		
	65		
	70		
	17		
40			
42			
45			
48			
50			
60			
70			

Z	D	H	d
18	38	50	120
	40		
	42		
	45		
	48		
	50		
	60		
19	38	50	120
	40		
	42		
	45		
	48		
	50		
	60		
20	38	50	120
	40		
	42		
	45		
	48		
	50		
	60		
70			

Sprockets with finished bore, keyway, 2 screws, and hardening teeth.



3/8" x 7/32"

06B - 1-2-3 9.525 x 5.72 mm DIN 8187 - ISO/R606

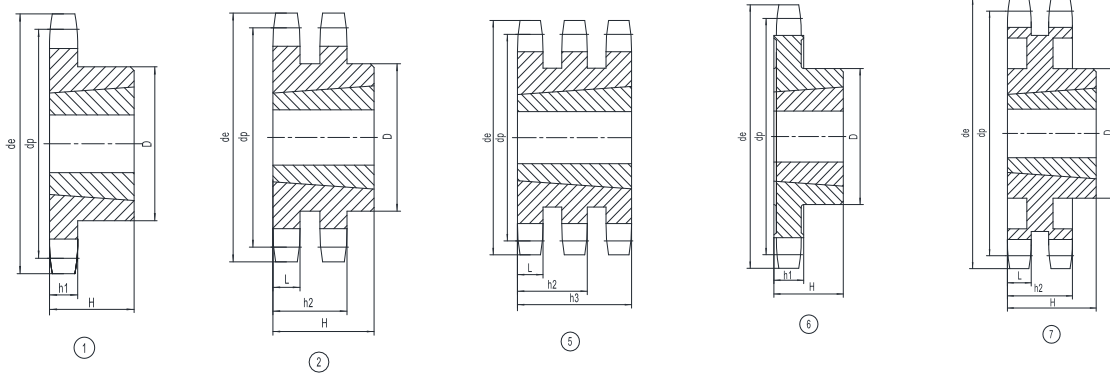
CHAIN	mm
Pitch	9.525
Internal width	5.72
Roller \varnothing	6.35

SPROCKETS	mm
Tooth radius r	10
Radius width C	1
Tooth width h1	5.3
Tooth width L	5.2
Tooth width h2	15.4
Tooth width h3	25.6

Material: Steel C45, * Cast iron GG25

Z	de	dp	TS				TD				TT			
			D	H	for Bush	Type	D	H	for Bush	Type	D	H	for Bush	Type
17	55.3	51.83	45	22	1008	1	41	22	1008	2	—	25.6	1008	5
18	58.3	54.85	45	22	1008	1	43	22	1008	2				
19	61.3	57.87	45	22	1008	1	46	22	1008	2	—	25.6	1008	5
20	64.3	60.89	46	22	1008	1	48	22	1008	2				
21	68.0	63.91	46	22	1008	1	49	22	1008	2	—	25.6	1008	5
22	71.0	66.93	50	22	1108	1	52	22	1108	2				
23	73.5	69.95	63	25	1210	1	59	25	1210	2	—	25.6	1210	5
24	77.0	72.97	63	25	1210	1	61	25	1210	2				
25	80.0	76.02	63	25	1210	1	64	25	1210	2	—	25.6	1210	5
26	83.0	79.02	63	25	1210	1	65	25	1210	2				
27	86.0	82.02	63	25	1210	1	70	25	1210	2	—	25.6	1210	5
28	89.0	85.07	63	25	1210	1	70	25	1210	2				
30	94.7	91.12	63	25	1210	1	75	25	1210	2	79	38	1615	4
38	119.5	115.35	70	25	1210	1	80	25	1610	2	90	38	1615	4
45	140.7	136.55	70	25	1210	1	80	25	1610	2				
*57	176.9	172.91	70	25	1210	6	80	25	1610	7				
*76	234.9	230.49	70	25	1210	6	80	25	1610	7				
*95	292.5	288.08	80	25	1210	6	90	25	1610	7				
*114	349.5	345.68	80	38	1210	6	95	38	1615	7				

Options: Hardening teeth, surface treatment black oxide.



1/2" x 5/16"

08B - 1-2-3 12.7 x 7.75 mm DIN 8187 - ISO/R606

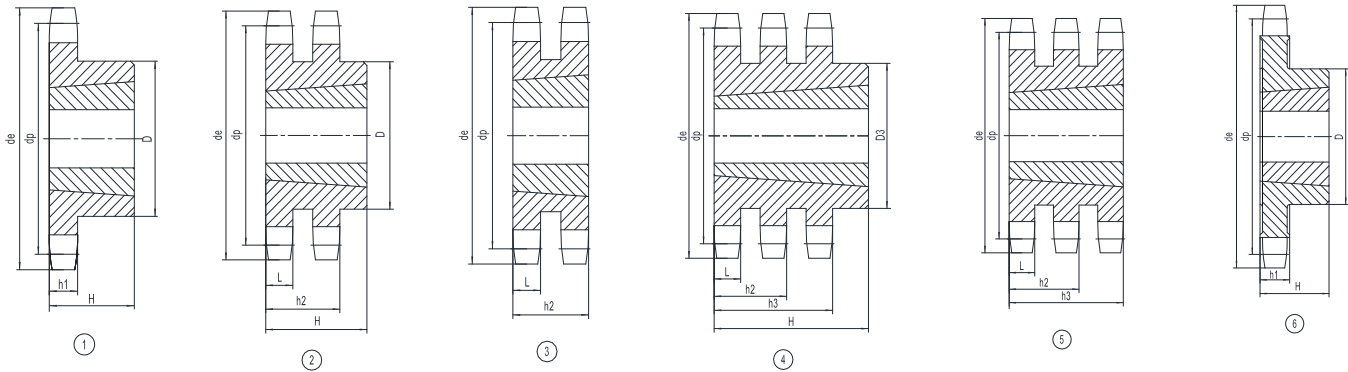
CHAIN	mm
Pitch	12.70
Internal width	7.75
Roller \varnothing	8.51

SPROCKETS	mm
Tooth radius r	13
Radius width C	1.3
Tooth width h1	7.2
Tooth width L	7
Tooth width h2	21
Tooth width h3	34.9

Material: Steel C45, * Cast iron GG25

Z	de	dp	TS				TD				TT			
			D	H	for Bush	Type	D	H	for Bush	Type	D	H	for Bush	Type
15	65.5	61.90	45	22	1008	1	46	22	1008	2	—	34.9	1008	5
16	69.5	65.10	50	22	1108	1	50	22	1108	2				
17	73.6	69.11	60	25	1210	1	56	25	1210	2	—	34.9	1210	5
18	77.8	73.14	60	25	1210	1	60	25	1210	2				
19	81.7	77.16	63	25	1210	1	62	25	1210	2	—	34.9	1210	5
20	85.5	81.19	71	25	1610	1	66	25	1610	2				
21	89.7	85.22	71	25	1610	1	70	25	1610	2	—	34.9	1610	5
22	93.8	89.24	71	25	1610	1	76	25	1610	2				
23	98.2	93.27	76	25	1610	1	79	25	1610	2	—	34.9	1610	5
24	101.8	97.29	76	25	1610	1	84	25	1610	2				
25	105.8	101.33	76	25	1610	1	87	32	2012	2	—	34.9	2012	5
26	110.0	105.36	76	25	1610	1	87	32	2012	2				
27	114.4	109.40	76	25	1610	1	87	32	2012	2	—	34.9	2012	5
28	118.0	113.42	90	32	2012	1	87	32	2012	2				
30	126.1	121.50	90	32	2012	1	87	32	2012	2	—	34.9	2012	5
38	158.6	153.80	90	32	2012	1	100	32	2012	2	—	34.9	2012	5
45	188.0	182.07	100	32	2012	1	100	32	2012	2				
*57	236.4	230.54	100	32	2012	6	100	32	2012	7				
*76	313.3	307.33	100	32	2012	6	100	32	2012	7				
*95	390.1	384.11	100	32	2012	6	100	32	2012	7				
*114	466.9	460.90	110	45	2517	6	110	45	2517	7				

Options: Hardening teeth, surface treatment black oxide.



5/8" x 3/8"

10B - 1-2-3 15.875 x 9.65 mm DIN 8187 - ISO/R606

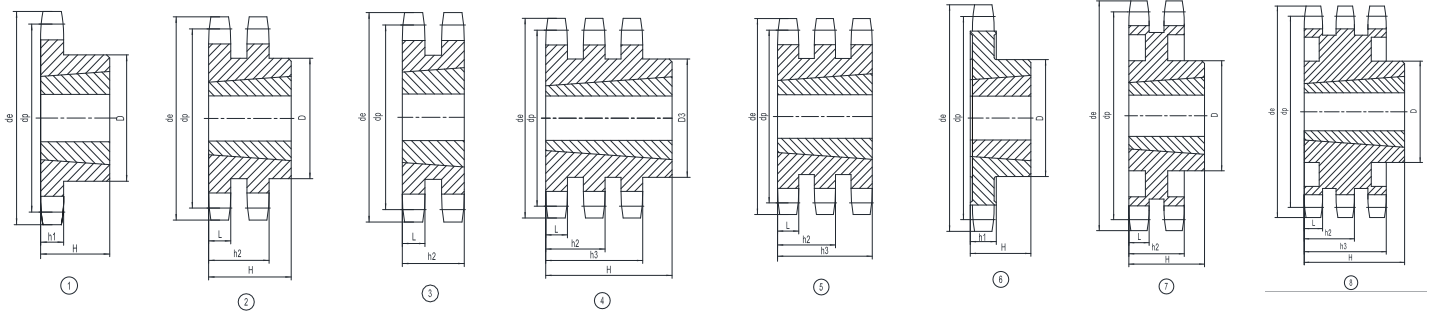
CHAIN	mm
Pitch	15.875
Internal width	9.65
Roller \varnothing	10.16

SPROCKETS	mm
Tooth radius r	16
Radius width C	1.6
Tooth width h1	9.1
Tooth width L	9
Tooth width h2	25.5
Tooth width h3	42.1

Material: Steel C45, * Cast iron GG25

Z	de	dp	TS				TD				TT			
			D	H	for Bush	Type	D	H	for Bush	Type	D	H	for Bush	Type
13	73.0	66.32	47	22	1008	1	—	25.5	1210	3				
14	78.0	71.34	52	22	1108	1								
15	83.0	76.36	60	25	1210	1	—	25.5	1210	3	—	42.1	1210	5
16	88.0	81.37	70	25	1610	1								
17	93.0	86.36	71	25	1610	1	—	25.5	1610	3	—	42.1	1210	5
18	98.3	91.42	75	25	1610	1								
19	103.3	96.45	75	25	1610	1	—	25.5	1610	3	—	42.1	1615	5
20	108.4	101.49	75	25	1610	1	—	25.5	1610	3				
21	113.4	106.52	76	25	1610	1	—	25.5	1610	3	—	42.1	1615	5
22	118.0	111.55	76	25	1610	1	—	25.5	1610	3				
23	123.4	116.58	76	25	1610	1	—	25.5	1610	3	—	42.1	2012	5
24	128.3	121.62	90	32	2012	1								
25	134.0	126.66	90	32	2012	1	90	32.0	2012	2	110	45.0	2517	4
26	139.0	131.70	90	32	2012	1								
27	144.0	136.75	90	32	2012	1	90	32.0	2012	2	120	45.0	2517	4
28	148.7	141.78	90	32	2012	1								
30	158.8	151.87	90	32	2012	1	90	32.0	2012	2	120	45.0	2517	4
38	199.2	192.24	100	32	2012	1	108	45.0	2517	2				
45	235.0	227.58	100	32	2012	1								
*57	296.0	288.18	100	32	2012	6								
*76	392.1	384.16	100	32	2012	6								
*95	488.5	480.14	110	45	2517	6								
*114	584.1	576.13	110	45	2517	6								

Options: Hardening teeth, surface treatment black oxide.



3/4" x 7/16"

12B - 1-2-3 19.05 x 11.68 mm DIN 8187 - ISO/R606

CHAIN	mm
Pitch	19.05
Internal width	11.68
Roller \varnothing	12.07

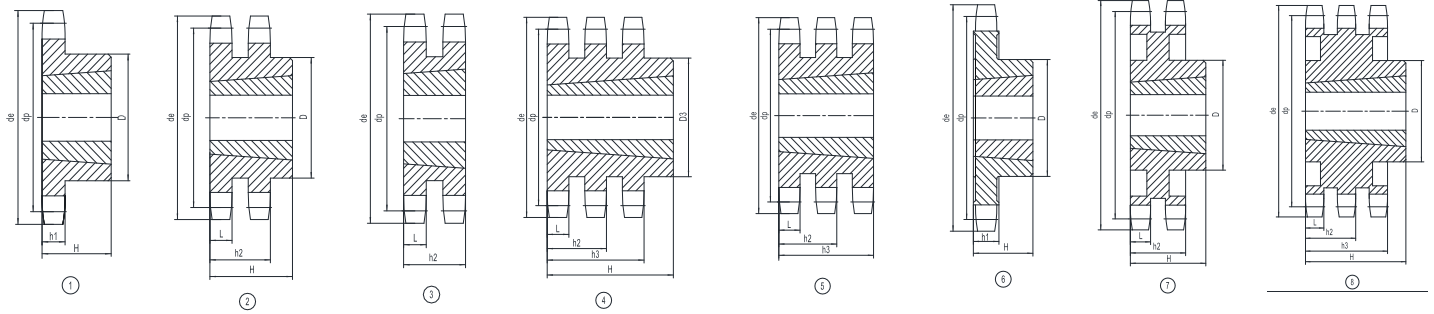
SPROCKETS	mm
Tooth radius r	19
Radius width C	2
Tooth width h1	11.1
Tooth width L	10.8
Tooth width h2	30.3
Tooth width h3	49.8

Material: Steel C45, * Cast iron GG25

Z	de	dp	TS				TD				TT			
			d	H	for Bush	Type	d	H	for Bush	Type	d	H	for Bush	Type
13	87.5	79.59	60	25	1210	1								
14	93.6	85.61	70	25	1610	1								
15	99.8	91.63	70	25	1610	1	—	30.3	1610	3	—	49.8	1615	5
16	105.5	97.65	75	25	1610	1	—	30.3	1610	3				
17	111.5	103.67	76	25	1610	1	—	30.3	1610	3	—	49.8	2012	5
18	118.0	109.71	90	32	2012	1	90	32.0	2012	2				
19	124.2	115.75	90	32	2012	1	90	32.0	2012	2	—	49.8	2012	5
20	129.7	121.78	90	32	2012	1	108	45.0	2517	2				
21	136.0	127.82	102	45	2517	1	108	45.0	2517	2	—	49.8	2517	5
22	141.8	133.86	102	45	2517	1	108	45.0	2517	2				
23	149.0	139.90	108	45	2517	1	108	45.0	2517	2	—	49.8	2517	5
24	153.9	145.94	108	45	2517	1	108	45.0	2517	2				
25	160.0	152.00	108	45	2517	1	108	45.0	2517	2	—	49.8	2517	5
26	165.9	158.04	108	45	2517	1	108	45.0	2517	2				
27	172.3	164.00	108	45	2517	1	108	45.0	2517	2	140	51.0	3020	4
28	178.0	170.13	108	45	2517	1	108	45.0	2517	2				
30	190.5	182.25	108	45	2517	1	108	45.0	2517	2	140	51.0	3020	4
38	239.0	230.69	108	45	2517	1	140	51.0	3020	2	140	51.0	3020	4
45	282.5	273.10	108	45	2517	1	140	51.0	3020	2	140	51.0	3020	4
*57	355.4	345.81	108	45	2517	6	140	51.0	3020	7	140	51.0	3020	8
*76	469.9	460.99	108	45	2517	6	140	51.0	3020	7	140	51.0	3020	8
*95	585.1	576.17	108	45	2517	6	140	51.0	3020	7	140	76.0	3030	8
*114	700.6	691.36	108	64	2525	6	140	76.0	3030	7	140	76.0	3030	8

Options: Hardening teeth, surface treatment black oxide.

16B Taper lock Sprockets



1" x 17.02 mm 16B - 1-2-3 25.4 x 17.2 mm DIN 8187 - ISO/R606

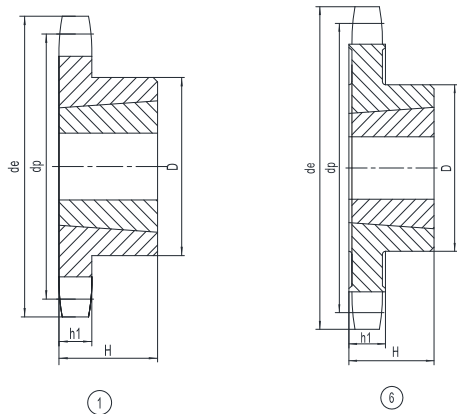
CHAIN	mm
Pitch	25.4
Internal width	17.02
Roller \varnothing	15.88

SPROCKETS	mm
Tooth radius r	26
Radius width C	2.5
Tooth width h1	16.2
Tooth width L	15.8
Tooth width h2	47.7
Tooth width h3	79.6

Material: Steel C45, * Cast iron GG25

Z	de	dp	TS				TD				TT			
			d	H	for Bush	Type	d	H	for Bush	Type	d	H	for Bush	Type
13	117.0	106.12	73	25	1610	1	—	47.7	2012	3				
14	125.0	114.15	76	25	1610	1								
15	133.0	122.17	76	25	1610	1	—	47.7	2012	3				
16	141.0	130.20	90	32	2012	1								
17	149.0	138.22	90	32	2012	1	—	47.7	2517	3	—	79.6	2517	5
18	157.0	146.28	108	45	2517	1								
19	165.2	154.33	108	45	2517	1	—	47.7	2517	3	—	79.6	3020	5
20	173.2	162.38	108	45	2517	1								
21	181.2	170.43	110	45	2517	1	140	51	3020	2	—	79.6	3030	5
22	189.3	178.48	110	45	2517	1								
23	197.5	186.53	110	45	2517	1	140	51	3020	2	—	79.6	3525	5
24	205.5	194.59	110	45	2517	1								
25	213.5	202.66	110	45	2517	1	140	51	3020	2	—	79.6	3525	4
26	221.6	210.72	110	45	2517	1								
27	229.6	218.79	110	45	2517	1	140	51	3020	2	—	79.6	3525	4
28	237.7	226.85	110	45	2517	1								
30	254.0	243.00	140	51	3020	1	140	51	3020	2	—	79.6	3525	4
38	320.7	307.59	140	51	3020	1	140	51	3020	2	—	79.6	3525	4
45	377.1	364.13	140	51	3020	1	140	51	3020	2	215	102	4040	4
*57	474.0	461.07	140	51	3020	6	175	65	3525	7	215	102	4040	8
*76	627.0	614.65	140	51	3020	6	175	65	3525	7	215	102	4040	8
*95	781.1	768.22	140	51	3020	6	215	102	4040	7	215	102	4040	8
*114	934.3	921.81	140	76	3020	6	215	102	4040	7	260	114	4040	8

Options: Hardening teeth, surface treatment black oxide.



1.1/4" x 3/4"

20B - 1 31.75 x 19.56 mm DIN 8187 - ISO/R606

CHAIN	mm
Pitch	31.75
Internal width	19.56
Roller \varnothing	19.05

SPROCKETS	mm
Tooth radius r	32
Radius width C	3.5
Tooth width h1	18.5
Tooth width L	18.2
Tooth width h2	54.6
Tooth width h3	91

Material: Steel C45, * Cast iron GG25

Z	de	dp	TS							
			d	H	for Bush	Type				
13	147.8	132.65	90	32	2012	1				
14	157.8	142.68	90	32	2012	1				
15	167.9	152.72	108	45	2517	1				
16	177.9	162.75	108	45	2517	1				
17	187.9	172.78	108	45	2517	1				
18	198.0	182.85	108	45	2517	1				
19	208.1	192.91	108	45	2517	1				
20	218.1	202.98	108	45	2517	1				
21	228.2	213.04	108	45	2517	1				
22	238.3	223.11	108	45	2517	1				
23	248.3	233.17	108	45	2517	1				
24	258.4	243.23	108	45	2517	1				
25	268.5	253.33	108	45	2517	1				
27	288.6	273.40	150	51	3020	1				
30	318.9	303.75	150	51	3020	1				
38	399.6	384.49	160	51	3020	1				
*45	470.3	455.17	160	51	3020	6				
*57	591.5	576.36	160	51	3020	6				
*76	783.5	768.32	160	51	3020	6				

Options: Hardening teeth, surface treatment black oxide.