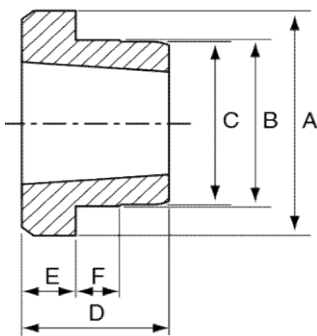


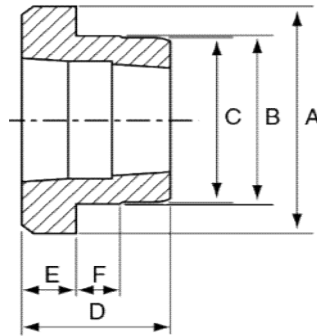


Taper Bushed Weld-on-Hubs are made out of steel, drilled, tapped and taper bored to receive standard Taper Bushes. The extended flange provides a convenient means of welding hubs into fan rotors, steel pulleys, plate sprockets, impellers, agitators and many other devices which must be firmly fastened to the shaft.

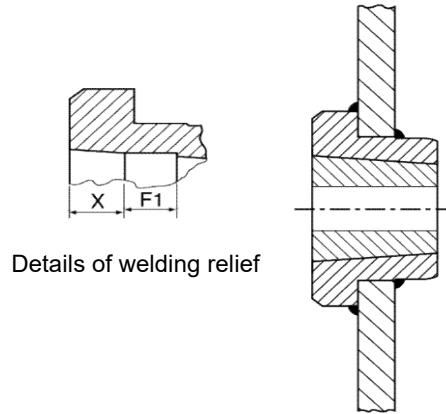
Fekerman Weld-on hubs are manufactured to complement the taper bush range and include W, WH, WM taper bore hubs.



From W12 to W25



From W30 to W100



Details of welding relief

Typical Assembly

## Type W - Taper Bushed Weld-on Hubs

Hub Size	Bush No.	A	B	C	D	E	F	F1	X
W12	1215	73.03	63.50	62.71	38.10	15.88	9.53	-	-
W16	1615	82.55	73.30	72.24	38.10	15.88	9.53	-	-
W25	2517	127.00	111.13	110.34	44.45	19.05	12.70	-	-
W30	3030	149.86	133.35	132.56	76.20	25.40	19.05	23	23
W35	3535	184.15	158.75	157.96	88.90	31.75	25.40	30	30
W40	4040	225.43	196.85	196.06	101.60	31.75	31.75	34	34
W45	4545	254.00	222.25	221.46	114.30	38.10	38.10	38	38
W50	5050	276.00	241.00	240.25	127.00	38.10	38.10	42	42
W60	6050	375.00	343.00	342.00	127.00	38.10	38.10	42	42
W70	7060	425.00	375.00	374.00	153.00	51.00	51.00	51	51
W80	8065	445.00	394.00	393.00	165.00	51.00	51.00	55	55
W100	10085	559.00	495.00	494.00	216.00	51.00	51.00	72	72

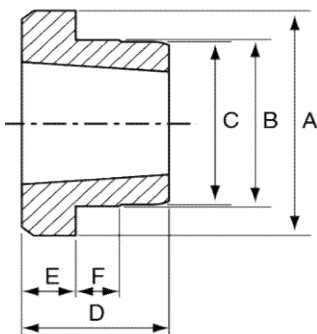
Material: Low carbon steel

Surface treatment: Oil

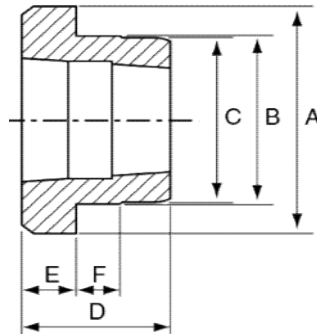


Taper Bushed Weld-on-Hubs are made out of steel, drilled, tapped and taper bored to receive standard Taper Bushes. The extended flange provides a convenient means of welding hubs into fan rotors, steel pulleys, plate sprockets, impellers, agitators and many other devices which must be firmly fastened to the shaft.

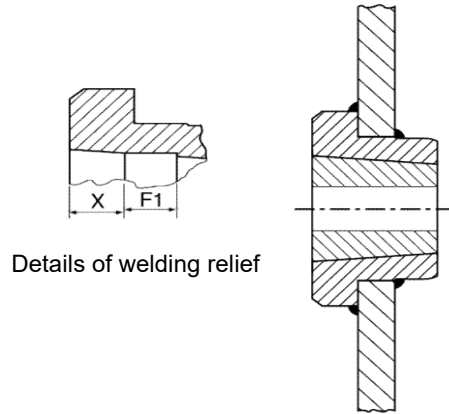
Fekerman Weld-on hubs are manufactured to complement the taper bush range and include W, WH, WM taper bore hubs.



From WH12 to WH25



From WH30 to WH50



Details of welding relief

Typical Assembly

## Type WH - Taper Bushed Weld-on Hubs

Hub Size	Bush No.	A	B	C	D	E	F	F1	X
WH12	1210	70	65	64.5	25	9	10	-	-
WH16-1	1610	80	75	74.5	25	9	10	-	-
WH20	2012	95	90	89.5	32	12	12	-	-
WH25	2517	115	110	109.5	44	19	15	-	-
WH30-2	3020	145	140	139.5	50	20	15	17	17
WH35	3525	190	180	179.5	65	25	25	22	22
WH40-1	4030	200	190	189.0	76	32	30	25	25
WH40-2	4040	200	190	189.5	101	32	30	34	34
WH45-1	4535	210	200	199.5	89	40	30	30	30
WH45-2	4545	210	200	199.5	114	40	30	38	38
WH50-1	5040	230	220	219.5	102	40	35	34	34
WH50-2	5050	230	220	219.5	127	40	35	42	42

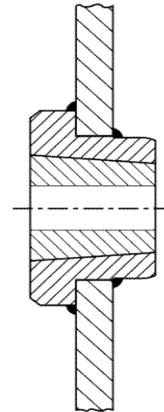
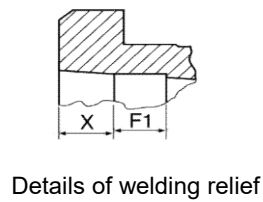
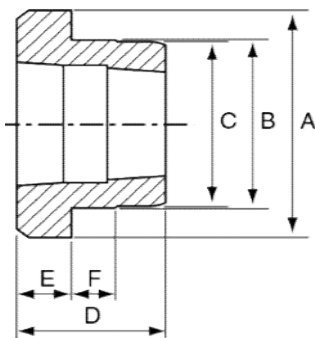
Material: Low carbon steel

Surface treatment: Oil



Taper Bushed Weld-on-Hubs are made out of steel, drilled, tapped and taper bored to receive standard Taper Bushes. The extended flange provides a convenient means of welding hubs into fan rotors, steel pulleys, plate sprockets, impellers, agitators and many other devices which must be firmly fastened to the shaft.

Fekerman Weld-on hubs are manufactured to complement the taper bush range and include W, WH, WM taper bore hubs.



Typical Assembly

## Type WM - Taper Bushed Weld-on Hubs

Hub Size	Bush No.	A	B	C	D	E	F	F1	X
WM12	1210	70	60	58	26	9	10	9	9
WM16-1	1610	83	70	68	26	9	10	9	9
WM16-2	1615	83	70	68	38	16	11	13	13
WM20	2012	95	90	88	32	12	12	11	11
WM25	2517	127	110	108	44	19	13	15	15
WM30-2	3020	152	130	125	50	20	15	17	17
WM30-3	3030	152	130	125	76	25	19	25	25
WM35	3535	184	155	151	89	32	25	30	30
WM40	4040	225	195	187	102	32	32	34	34
WM45	4545	254	220	213	114	38	38	38	38
WM50	5050	276	242	228	127	38	38	42	42

Material: Low carbon steel

Surface treatment: Oil