

Poly-V Pulleys

J-K-L

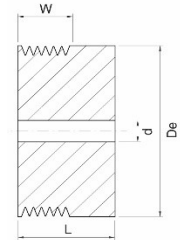


Dimensions of Poly-V Pulleys - mounting taper bushing TB type

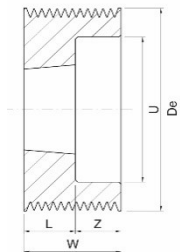
Pulleys with small diameter are supplied with solid hub execution prebored.(Ref.type 1)

Section "J"

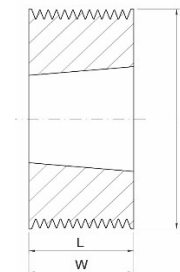
De [mm]	Grooves	Type	Taper Bushing	L [mm]	z [mm]	M [mm]	U [mm]	d [mm]	W [mm]
30	4	1	-	22.5	-	-	-	9.5	13.5
	8	1	-	32.0	-	-	-	9.5	23.0
	12	1	-	41.5	-	-	-	9.5	32.5
	16	1	-	51.0	-	-	-	9.5	42.0
	20	1	-	61.0	-	-	-	9.5	52.0
35	4	1	-	22.5	-	-	-	9.5	13.5
	8	1	-	32.0	-	-	-	9.5	23.0
	12	1	-	41.5	-	-	-	9.5	32.5
	16	1	-	51.0	-	-	-	9.5	42.0
	20	1	-	61.0	-	-	-	9.5	52.0
40	4	1	-	22.5	-	-	-	12.0	13.5
	8	1	-	32.0	-	-	-	12.0	23.0
	12	1	-	41.5	-	-	-	12.0	32.5
	16	1	-	51.0	-	-	-	12.0	42.0
	20	1	-	61.0	-	-	-	12.0	52.0
45	4	1	-	22.5	-	-	-	12.0	13.5
	8	1	-	32.0	-	-	-	12.0	23.0
	12	1	-	41.5	-	-	-	12.0	32.5
	16	1	-	51.0	-	-	-	12.0	42.0
	20	1	-	61.0	-	-	-	12.0	52.0
50	4	1	-	22.5	-	-	-	12.0	13.5
	8	1	-	32.0	-	-	-	12.0	23.0
	12	1	-	41.5	-	-	-	12.0	32.5
	16	1	-	51.0	-	-	-	12.0	42.0
	20	1	-	61.0	-	-	-	12.0	52.0
56	4	7	1108	23.0	9.5	50	-	-	13.5
	8	3	1108	23.0	-	-	-	-	23.0
	12	1	-	41.5	-	-	-	12	32.5
	16	1	-	51.0	-	-	-	12	42.0
	20	1	-	61.0	-	-	-	12	52.0
60	4	7	1108	23.0	9.5	50	-	-	13.5
	8	3	1108	23.0	-	-	-	-	23.0
	12	2	1108	23.0	9.5	-	45	-	32.5
	16	1	-	51.0	-	-	-	12	42.0
	20	1	-	61.0	-	-	-	12	52.0
63	4	7	1108	23.0	9.5	50	-	-	13.5
	8	3	1108	23.0	-	-	-	-	23.0
	12	2	1108	23.0	9.5	-	45	-	32.5
	16	1	-	51.0	-	-	-	12	42.0
	20	1	-	61.0	-	-	-	12	52.0
67	4	7	1108	23.0	9.5	50	-	-	13.5
	8	3	1108	23.0	-	-	-	-	23.0
	12	2	1108	23.0	9.5	-	51	-	32.5
	16	1	-	51.0	-	-	-	12	42.0
	20	1	-	61.0	-	-	-	12	52.0
71	4	7	1108	23.0	9.5	60	-	-	13.5
	8	3	1108	23.0	-	-	-	-	23.0
	12	2	1108	23.0	9.5	-	55	-	32.5
	16	3	1215	42.0	-	-	55	12	42.0
	20	2	1215	42.0	10.0	-	55	12	52.0
75	4	7	1108	23.0	9.5	60	-	-	13.5
	8	3	1108	23.0	-	-	-	-	23.0
	12	2	1210	26.0	6.5	-	59	-	32.5
	16	2	1610	26.0	16.0	-	59	12	42.0
	20	2	1615	42.0	10.0	-	59	12	52.0



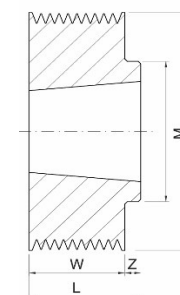
1



2



3

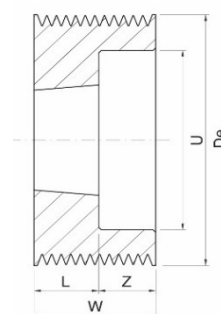


7

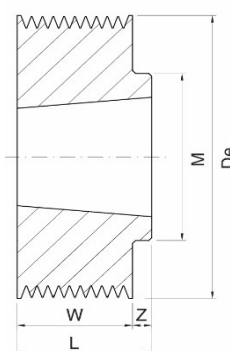
Dimensions of Poly-V Pulleys - mounting taper bushing TB type

Section "J"

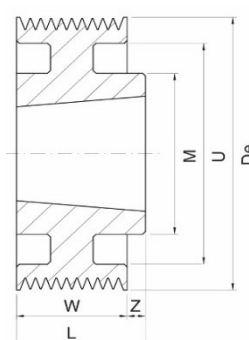
De [mm]	Grooves	Type	Taper Bushing	L [mm]	z [mm]	M [mm]	U [mm]	W [mm]
80	4	7	1310	26	12.5	70	-	13.5
	8	7	1310	26	3.0	70	-	23.0
	12	2	1610	26	6.5	-	55	32.5
	16	2	1610	26	16.0	-	55	42.0
	20	2	1615	42	10.0	-	55	52.0
85	4	7	1310	26	12.5	70	-	13.5
	8	7	1310	26	3.0	70	-	23.0
	12	2	1610	26	6.5	-	69	32.5
	16	2	1610	26	16.0	-	69	42.0
	20	2	1615	42	10.0	-	69	52.0
90	4	7	1610	26	12.5	82	-	13.5
	8	7	1610	26	3.0	82	-	23.0
	12	2	1610	26	6.5	-	74	32.5
	16	2	1610	26	16.0	-	74	42.0
	20	2	1615	42	10.0	-	74	52.0
95	4	7	1610	26	12.5	82	-	13.5
	8	7	1610	26	3.0	82	-	23.0
	12	2	1610	26	6.5	-	79	32.5
	16	2	1610	26	16.0	-	79	42.0
	20	2	1615	42	10.0	-	79	52.0
100	4	7	1610	26	12.5	88	-	13.5
	8	7	1610	26	3.0	88	-	23.0
	12	2	1610	26	6.5	-	82	32.5
	16	2	1610	26	16.0	-	82	42.0
	20	2	1615	42	10.0	-	82	52.0
106	4	7	1610	26	12.5	88	-	13.5
	8	7	1610	26	3.0	88	-	23.0
	12	2	1610	26	6.5	-	88	32.5
	16	2	1610	26	16.0	-	88	42.0
	20	2	1615	42	10.0	-	88	52.0
112	4	7	1610	26	12.5	90	-	13.5
	8	7	1610	26	3.0	90	-	23.0
	12	2	1610	26	6.5	-	94	32.5
	16	2	1610	26	16.0	-	94	42.0
	20	2	1615	42	10.0	-	94	52.0
118	4	7	1610	26	12.5	90	-	13.5
	8	7	1610	26	3.0	90	-	23.0
	12	2	2012	32	0.5	-	98	32.5
	16	2	2012	32	10.0	-	98	42.0
	20	2	2012	32	20.0	-	98	52.0
125	4	8	1610	26	12.5	90	109	13.5
	8	8	1610	26	3.0	90	109	23.0
	12	2	2012	32	0.5	-	105	32.5
	16	2	2012	32	10.0	-	105	42.0
	20	2	2517	32	7.0	-	105	52.0
132	4	8	1610	26	12.5	90	116	13.5
	8	8	1610	26	3.0	90	116	23.0
	12	2	2012	32	0.5	-	112	32.5
	16	2	2012	32	10.0	-	112	42.0
	20	2	2517	45	7.0	-	112	52.0
140	4	8	1610	26	12.5	90	124	13.5
	8	8	1610	26	3.0	90	124	23.0
	12	7	2517	45	12.5	120	-	32.5
	16	7	2517	45	3.0	120	-	42.0
	20	2	2517	45	7.0	-	124	52.0



2



7

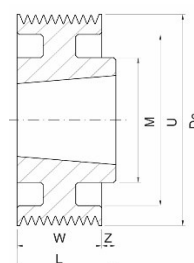


8

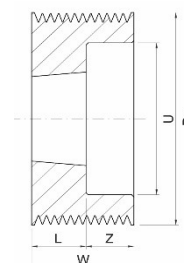
Dimensions of Poly-V Pulleys - mounting taper bushing TB type

Section "J"

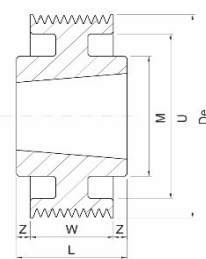
De [mm]	Grooves	Type	Taper Bushing	L [mm]	z [mm]	M [mm]	U [mm]	W [mm]
160	4	8	2012	32	18.5	110	144	13.5
	8	8	2012	32	9.0	110	144	23.0
	12	8	2517	45	12.5	120	140	32.5
	16	8	2517	45	3.0	120	140	42.0
	20	2	2517	45	7.0	-	140	52.0
180	4	6	2012	32	9.3	110	164	13.5
	8	6	2012	32	4.5	110	164	23.0
	12	6	2517	45	6.3	120	160	32.5
	16	6	2517	45	1.5	120	160	42.0
	20	5	2517	45	3.5	120	160	52.0
200	4	6	2012	32	9.3	110	185	13.5
	8	6	2012	32	4.5	110	186	23.0
	12	6	2517	45	6.3	120	180	32.5
	16	6	2517	45	1.5	120	180	42.0
	20	5	2517	45	3.5	120	180	52.0
224	4	6	2012	32	9.3	110	208	13.5
	8	6	2012	32	4.5	110	208	23.0
	12	6	2517	45	6.3	120	204	32.5
	16	6	2517	45	1.5	120	204	42.0
	20	5	2517	45	3.5	120	204	52.0
250	4	9	2012	32	9.3	110	234	13.5
	8	9	2012	32	4.5	110	234	23.0
	12	6	2517	45	6.3	120	230	32.5
	16	6	2517	45	1.5	120	230	42.0
	20	5	2517	45	3.5	120	230	52.0
280	4	9	2012	32	9.3	110	264	13.5
	8	9	2012	32	4.5	110	264	23.0
	12	9	2517	45	6.3	120	260	32.5
	16	9	2517	45	1.5	120	260	42.0
	20	10	2517	45	3.5	120	260	52.0
315	4	9	2012	32	9.3	110	299	13.5
	8	9	2012	32	4.5	110	299	23.0
	12	9	2517	45	6.3	120	295	32.5
	16	9	2517	45	1.5	120	295	42.0
	20	10	2517	45	3.5	120	295	52.0
355	4	9	2517	45	15.7	120	339	13.5
	8	9	2517	45	11.0	120	339	23.0
	12	9	2517	45	6.3	120	335	32.5
	16	9	3020	52	5.0	146	335	42.0
	20	10	3020	52	-	146	335	52.0
400	4	9	2517	45	15.8	120	380	13.5
	8	9	2517	45	11.0	120	380	23.0
	12	9	2517	45	6.3	120	380	32.5
	16	9	3020	52	5.0	146	380	42.0
	20	10	3020	52	-	146	380	52.0



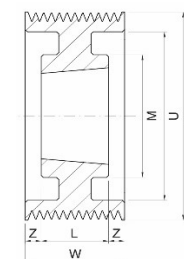
8



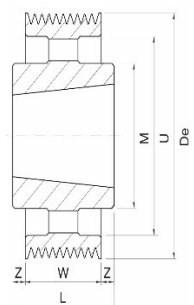
2



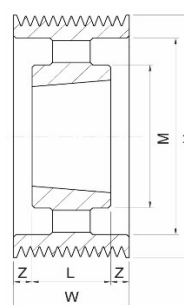
6



5



9



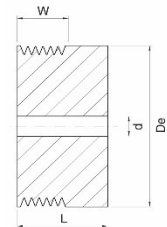
10

Dimensions of Poly-V Pulleys - mounting taper bushing TB type

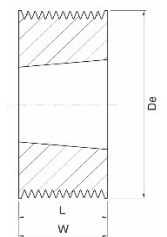
Pulleys with small diameter are supplied with solid hub execution prebored.(Ref.type 1)

Section "K"

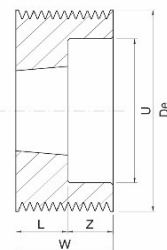
De [mm]	Grooves	Type	Taper Bushing	L [mm]	z [mm]	M [mm]	U [mm]	d [mm]	W [mm]
50	4	1	-	32	-	-	-	12	20.5
	6	1	-	40	-	-	-	12	28.5
	8	1	-	48	-	-	-	12	36.0
	10	1	-	54	-	-	-	12	42.0
	12	1	-	61	-	-	-	12	49.0
56	4	3	1108	20.5	-	-	-	-	20.5
	6	1	-	40	-	-	-	12	28.5
	8	1	-	48	-	-	-	12	36.0
	10	1	-	54	-	-	-	12	42.0
	12	1	-	61	-	-	-	12	49.0
60	4	3	1108	20.5	-	-	-	-	20.5
	6	2	1108	22	6.5	-	45	-	28.5
	8	1	-	48	-	-	-	12	36.0
	10	1	-	54	-	-	-	12	42.0
	12	1	-	61	-	-	-	12	49.0
63	4	3	1108	20.5	-	-	-	-	20.5
	6	2	1108	22	6.5	-	48	-	28.5
	8	1	-	48	-	-	-	12	36.0
	10	1	-	54	-	-	-	12	42.0
	12	1	-	61	-	-	-	12	49.0
67	4	3	1108	20.5	-	-	-	-	20.5
	6	2	1108	22	6.5	-	51	-	28.5
	8	1	-	48	-	-	-	12	36.0
	10	1	-	54	-	-	-	12	42.0
	12	1	-	61	-	-	-	12	49.0
71	4	3	1108	20.5	-	-	-	-	20.5
	6	2	1108	23	6.5	-	55	-	28.5
	8	2	1210	26	10	-	55	-	36.0
	10	3	1215	42	-	-	-	-	42.0
	12	2	1215	42	7	-	55	-	49.0
75	4	3	1108	20.5	-	-	-	-	20.5
	6	2	1210	26	2.5	-	59	-	28.5
	8	2	1210	26	10	-	59	-	36.0
	10	3	1215	42	-	-	-	-	42.0
	12	2	1215	42	7	-	59	-	49.0
80	4	7	1210	26	5.5	70	-	-	20.5
	6	2	1210	26	2.5	-	64	-	28.5
	8	2	1210	26	10	-	64	-	36.0
	10	3	1215	42	-	-	-	-	42.0
	12	2	1215	42	7	-	64	-	49.0
85	4	7	1210	26	5.5	70	-	-	20.5
	6	2	1210	26	2.5	-	69	-	28.5
	8	2	1210	26	10	-	69	-	36.0
	10	3	1215	42	-	-	-	-	42.0
	12	2	1215	42	7	-	69	-	49.0
90	4	7	1210	26	5.5	82	-	-	20.5
	6	2	1210	26	2.5	-	74	-	28.5
	8	2	1210	26	10	-	74	-	36.0
	10	3	1215	42	-	-	-	-	42.0
	12	2	1215	42	7	-	74	-	49.0
95	4	7	1610	26	5.5	90	-	-	20.5
	6	2	1610	26	2.5	-	79	-	28.5
	8	2	1610	26	10	-	79	-	36.0
	10	3	1615	42	-	-	-	-	42.0
	12	2	1615	42	7	-	-	-	49.0
100	4	7	1610	26	5.5	90	-	-	20.5
	6	2	1610	26	2.5	-	82	-	28.5
	8	2	1610	26	10	-	82	-	36.0
	10	3	1615	42	-	-	-	-	42.0
	12	2	1615	42	7	-	82	-	49.0



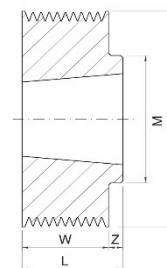
1



3



2

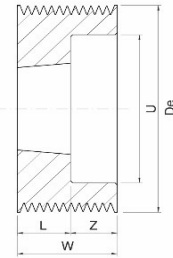


7

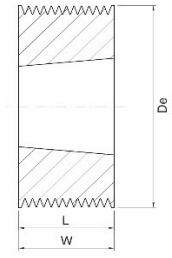
Dimensions of Poly-V Pulleys - mounting taper bushing TB type

Section "K"

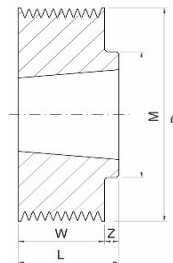
De [mm]	Grooves	Type	Taper Bushing	L [mm]	z [mm]	M [mm]	U [mm]	W [mm]
106	4	7	1610	26	5.5	90	-	20.5
	6	2	1610	26	2.5	-	88	28.5
	8	2	1610	26	10	-	88	36.0
	10	3	1615	42	-	-	-	42.0
	12	2	1615	42	7	-	88	49.0
112	4	7	1610	26	5.5	90	-	20.5
	6	2	1610	26	2.5	-	94	28.5
	8	2	1610	26	10	-	94	36.0
	10	3	1615	42	-	-	-	42.0
	12	2	1615	42	7	-	94	49.0
118	4	7	1610	26	5.5	90	-	20.5
	6	7	2012	32	3.5	110	-	28.5
	8	2	2012	32	4	-	98	36.0
	10	2	2012	32	10	-	98	42.0
125	4	8	1610	26	5.5	90	109	20.5
	6	7	2012	32	3.5	110	-	28.5
	8	2	2012	32	4	-	105	36.0
	10	2	2012	32	10	-	105	42.0
132	4	8	1610	26	5.5	90	116	20.5
	6	7	2012	32	3.5	110	-	28.5
	8	2	2012	32	4	-	112	36.0
	10	2	2012	32	10	-	112	42.0
140	4	8	1610	26	5.5	90	124	20.5
	6	7	2517	45	16.5	120	-	28.5
	8	7	2517	45	9	120	-	36.0
	10	7	2517	45	3	120	-	42.0
150	4	8	1610	26	5.5	90	134	20.5
	6	7	2517	45	16.5	120	-	28.5
	8	7	2517	45	9	120	-	36.0
	10	7	2517	45	3	120	-	42.0
160	4	8	1610	26	5.5	90	130	49.0
	6	8	2517	45	11.5	110	144	20.5
	8	8	2517	45	16.5	120	140	28.5
	10	8	2517	45	9	120	140	36.0
170	4	8	2517	45	3	120	140	42.0
	6	8	2517	45	4	-	140	49.0
	8	8	2012	32	11.5	110	154	20.5
	10	8	2517	45	16.5	120	150	28.5
180	8	8	2517	45	9	120	150	36.0
	10	7	2517	45	3	120	150	42.0
	12	2	2517	45	4	-	150	49.0
	4	6	2012	32	5.75	110	164	20.5
190	6	6	2517	45	8.25	120	160	28.5
	8	6	2517	45	4.5	120	160	36.0
	10	6	2517	45	1.5	120	160	42.0
	12	5	2517	45	2	120	160	49.0
200	4	6	2012	32	5.75	110	174	20.5
	6	6	2517	45	8.25	120	170	28.5
	8	6	2517	45	4.5	120	170	36.0
	10	6	2517	45	1.5	120	170	42.0
200	12	5	2517	45	2	120	180	49.0
	4	6	2012	32	5.75	110	184	20.5
	6	6	2517	45	8.25	120	180	28.5
	8	6	2517	45	4.5	120	180	36.0
200	10	6	2517	45	1.5	120	180	42.0
	12	5	2517	45	2	120	180	49.0



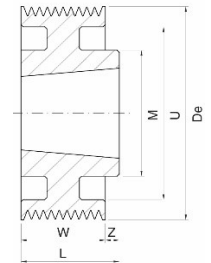
2



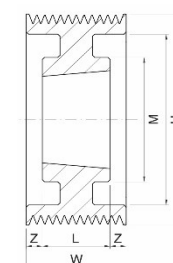
3



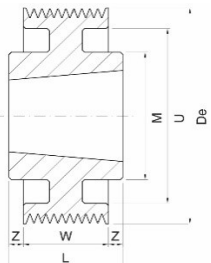
7



8



5

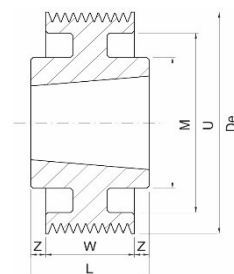


6

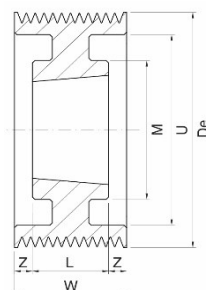
Dimensions of Poly-V Pulleys - mounting taper bushing TB type

Section "K"

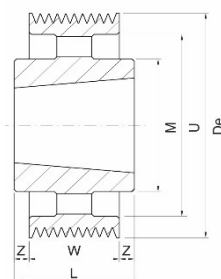
De [mm]	Grooves	Type	Taper Bushing	L [mm]	z [mm]	M [mm]	U [mm]	W [mm]
212	4	6	2012	32	5.75	110	196	20.5
	6	6	2517	45	8.25	120	192	28.5
	8	6	2517	45	4.5	120	192	36.0
	10	6	2517	45	1.5	120	192	42.0
	12	5	2517	45	2	120	192	49.0
224	4	6	2012	32	5.75	110	208	20.5
	6	6	2517	45	8.25	120	204	28.5
	8	6	2517	45	4.5	120	204	36.0
	10	6	2517	45	1.5	120	204	42.0
	12	5	2517	45	2	120	204	49.0
236	4	6	2012	32	5.75	110	220	20.5
	6	6	2517	45	8.25	120	216	28.5
	8	6	2517	45	4.5	120	216	36.0
	10	6	2517	45	1.5	120	216	42.0
	12	5	2517	45	2	120	216	49.0
250	4	9	2012	32	5.75	110	234	20.5
	6	6	2517	45	8.25	120	230	28.5
	8	6	2517	45	4.5	120	230	36.0
	10	6	2517	45	1.5	120	230	42.0
	12	5	2517	45	2	120	230	49.0
280	4	9	2012	32	5.75	110	264	20.5
	6	9	2517	45	8.25	120	260	28.5
	8	9	2517	45	4.5	120	260	36.0
	10	9	3020	52	5	146	256	42.0
	12	9	3020	52	1.5	146	256	49.0
315	4	9	2012	32	5.75	110	299	20.5
	6	9	2517	45	8.25	120	295	28.5
	8	9	2517	45	4.5	120	295	36.0
	10	9	3020	52	5	146	285	42.0
	12	9	3020	52	1.5	146	285	49.0
355	4	9	2517	45	12.25	120	339	20.5
	6	9	2517	45	8.25	120	339	28.5
	8	9	3020	52	8	146	335	36.0
	10	9	3020	52	5	146	335	42.0
	12	9	3020	52	1.5	146	335	49.0
400	4	9	2517	45	12.25	120	380	20.5
	6	9	2517	45	8.25	120	380	28.5
	8	9	3020	52	8	146	370	36.0
	10	9	3020	52	5	146	370	42.0
	12	9	3020	52	1.5	146	370	49.0
450	4	9	2517	45	12.25	120	420	20.5
	6	9	2517	45	8.25	120	420	28.5
	8	9	3020	52	8	146	420	36.0
	10	9	3020	52	5	146	420	42.0
	12	9	3020	52	1.5	146	420	49.0
500	4	9	2517	45	12.25	120	470	20.5
	6	9	2517	45	8.25	120	470	28.5
	8	9	3020	52	8	146	470	36.0
	10	9	3020	52	5	146	470	42.0
	12	9	3020	52	1.5	146	470	49.0



6



5

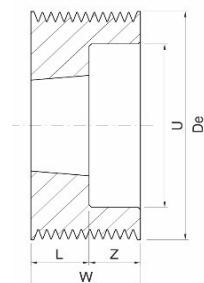


9

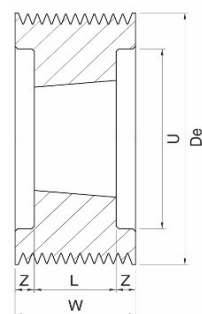
Dimensions of Poly-V Pulleys - mounting taper bushing TB type

Section "L"

De [mm]	Grooves	Type	Taper Bushing	L [mm]	z [mm]	U [mm]	W [mm]
75	6	2	1210	26	12.5	56	38.5
	8	2	1210	26	22	56	48
	10	2	1215	42	15	56	57
	12	4	1215	42	25	56	67
80	6	2	1210	26	12.5	56	38.5
	8	2	1210	26	22	56	48
	10	2	1215	42	15	56	57
	12	4	1215	42	25	56	67
85	6	2	1210	26	12.5	61	38.5
	8	2	1210	26	22	61	48
	10	2	1215	42	15	61	57
	12	2	1215	42	25	61	67
	16	4	1215	42	22	61	86
90	6	2	1210	26	12.5	66	38.5
	8	2	1210	26	22	66	48
	10	2	1215	42	15	66	57
	12	2	1215	42	25	66	67
	16	4	1215	42	22	66	86
95	6	2	1210	26	12.5	71	38.5
	8	2	1210	26	22	71	48
	10	2	1215	42	15	71	57
	12	2	1215	42	25	71	67
	16	4	1215	42	22	71	86
100	6	2	1610	26	12.5	76	38.5
	8	2	1610	26	22	76	48
	10	2	2012	32	25	79	57
	12	2	2012	32	35	79	67
	16	4	2012	32	27	79	86
106	6	2	1610	26	12.5	82	38.5
	8	2	1610	26	22	82	48
	10	2	2012	32	25	82	57
	12	2	2012	32	35	82	67
	16	4	2012	32	27	82	86
112	6	2	1610	26	12.5	88	38.5
	8	2	1610	26	22	88	48
	10	2	2012	32	25	88	57
	12	2	2012	32	35	88	67
	16	4	2012	32	27	88	86
118	6	2	2012	32	6.5	94	38.5
	8	2	2012	32	16	94	48
	10	4	2517	45	6	97	57
	12	4	2517	45	11	97	67
	16	4	2517	45	20.5	97	86
	20	4	2517	45	30	97	105
125	6	2	2012	32	6.5	101	38.5
	8	2	2012	32	16	101	48
	10	4	2517	45	6	101	57
	12	4	2517	45	11	101	67
	16	4	2517	45	20.5	101	86
	20	4	2517	45	30	101	105
132	6	2	2012	32	6.5	108	38.5
	8	2	2012	32	16	108	48
	10	4	2517	45	6	108	57
	12	4	2517	45	11	108	67
	16	4	2517	45	20.5	108	86
	20	4	2517	45	30	108	105



2

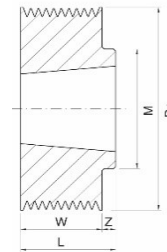


4

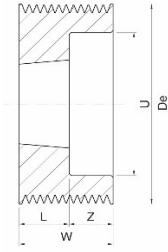
Dimensions of Poly-V Pulleys - mounting taper bushing TB type

Section "L"

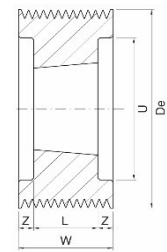
De [mm]	Grooves	Type	Taper Bushing	L [mm]	z [mm]	U [mm]	W [mm]
140	6	7	2517	45	6.5	-	38.5
	8	2	2517	45	3	116	48
	10	4	2517	45	6	116	57
	12	4	2517	45	11	116	67
	16	4	2517	45	20.5	116	86
	20	4	3020	52	26.5	116	105
150	6	7	2517	45	6.5	-	38.5
	8	2	2517	45	3	126	48
	10	4	2517	45	6	126	57
	12	4	2517	45	11	126	67
	16	4	2517	45	20.5	126	86
	20	4	3020	52	26.5	126	105
160	6	7	2517	45	6.5	-	38.5
	8	2	2517	45	3	136	48
	10	4	2517	45	6	136	57
	12	4	2517	45	11	136	67
	16	4	3020	52	17	136	86
	20	4	3020	52	26.5	136	105
170	6	8	2517	45	6.5	146	38.5
	8	2	2517	45	3	146	48
	10	4	2517	45	6	146	57
	12	4	2517	45	11	146	67
	16	4	3020	52	17	146	86
	20	4	3020	52	26.5	146	105
180	6	6	2517	45	3.25	156	38.5
	8	5	2517	45	1.5	156	48
	10	5	2517	45	6	156	57
	12	5	2517	45	11	156	67
	16	4	3020	52	17	156	86
	20	4	3020	52	26.5	156	105
190	6	6	2517	45	3.25	166	38.5
	8	5	2517	45	1.5	166	48
	10	5	2517	45	6	166	57
	12	5	2517	45	11	166	67
	16	4	3020	52	17	166	86
	20	4	3020	52	26.5	166	105
200	6	6	2517	45	3.25	176	38.5
	8	5	2517	45	1.5	176	48
	10	4	3020	52	2.5	176	57
	12	4	3020	52	7.5	176	67
	16	4	3020	52	17	176	86
	20	4	3535	89	8	176	105
212	6	6	2517	45	3.25	188	38.5
	8	5	2517	45	1.5	188	48
	10	4	3020	52	2.5	188	57
	12	4	3020	52	7.5	188	67
	16	4	3020	52	17	188	86
	20	4	3535	89	8	188	105
224	6	6	2517	45	3.25	202	38.5
	8	5	2517	45	1.5	202	48
	10	5	3020	52	2.5	202	57
	12	5	3020	52	7.5	202	67
	16	5	3020	52	17	202	86
	20	5	3535	89	8	202	105
236	6	6	2517	45	3.25	214	38.5
	8	5	2517	45	1.5	214	48
	10	5	3020	52	2.5	214	57
	12	5	3020	52	7.5	214	67
	16	5	3020	52	17	214	86
	20	5	3535	89	8	214	105



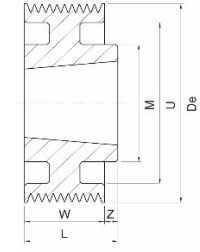
7



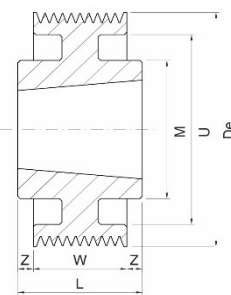
2



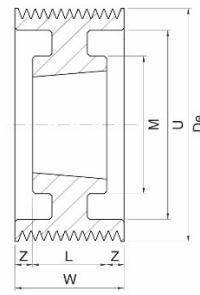
4



8



6

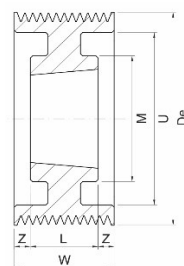


5

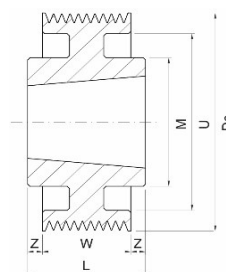
Dimensions of Poly-V Pulleys - mounting taper bushing TB type

Section "L"

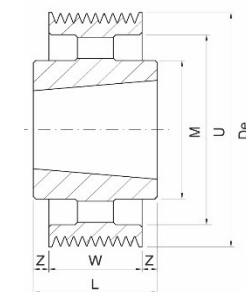
De [mm]	Grooves	Type	Taper Bushing	L [mm]	z [mm]	U [mm]	W [mm]
250	6	9	2527	45	3.25	228	38.5
	8	5	2517	45	1.5	228	48
	10	5	3020	52	2.5	228	57
	12	5	3020	52	7.5	228	67
	16	5	3020	52	17	228	86
	20	5	3535	89	8	226	105
280	6	9	2517	45	3.25	256	38.5
	8	6	3020	52	2	256	48
	10	5	3020	52	2.5	256	57
	12	5	3020	52	7.5	256	67
	16	6	3535	89	1.5	256	86
	20	5	3535	89	8	256	105
315	6	9	2517	45	3.25	285	38.5
	8	9	3020	52	2	285	48
	10	6	3535	89	16	285	57
	12	6	3535	89	11	285	67
	16	6	3535	89	1.5	285	86
	20	5	4040	102	1.5	285	105
355	6	9	3020	52	6.75	325	38.5
	8	9	3020	52	2	325	48
	10	9	3535	89	16	325	57
	12	9	3535	89	11	325	67
	16	9	3535	89	1.5	325	86
	20	5	4040	102	1.5	325	105
400	6	9	3020	52	6.75	370	38.5
	8	9	3020	52	2	370	48
	10	9	3535	89	16	370	57
	12	9	3535	89	11	370	67
	16	9	3535	89	1.5	370	86
	20	10	4040	102	1.5	370	105
450	6	9	3020	52	6.75	420	38.5
	8	9	3020	52	2	420	48
	10	9	3535	89	16	420	57
	12	9	3535	89	11	420	67
	16	9	3535	89	1.5	420	86
	20	10	4040	102	1.5	420	105
500	6	9	3020	52	6.75	470	38.5
	8	9	3020	52	2	470	48
	10	9	3535	89	16	470	57
	12	9	3535	89	11	470	67
	16	9	3535	89	1.5	470	86
	20	9	5050	127	11	470	105
630	6	9	3020	52	6.75	600	38.5
	8	9	3020	52	2	600	48
	10	9	3535	89	16	600	57
	12	9	3535	89	11	600	67
	16	9	4040	102	8	600	86
	20	9	5050	127	11	600	105
800	6	9	3535	89	25.2	770	38.5
	8	9	3535	89	20.5	770	48
	10	9	4040	102	22.5	770	57
	12	9	4040	102	17.5	770	67
	16	9	5050	127	20.5	770	86
	20	9	5050	127	11	770	105



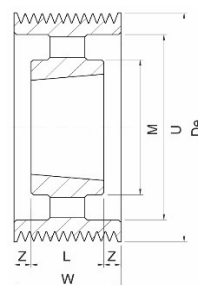
5



6



9



10