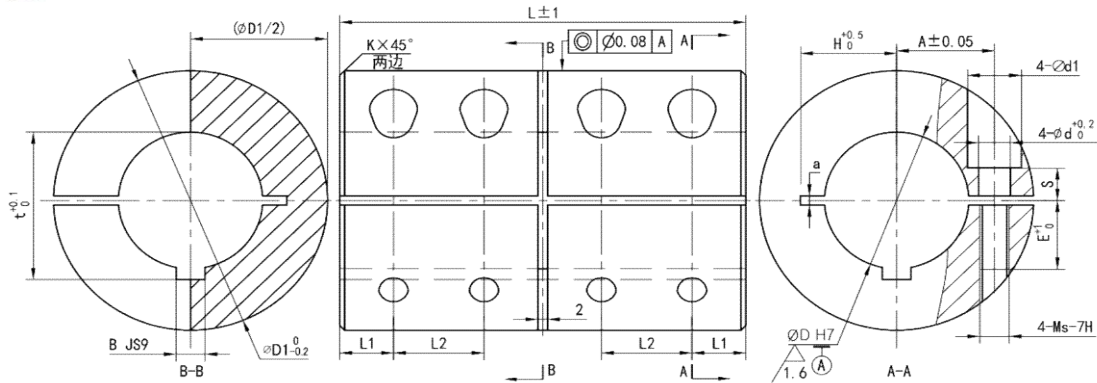




ONE-PIECE CLAMP



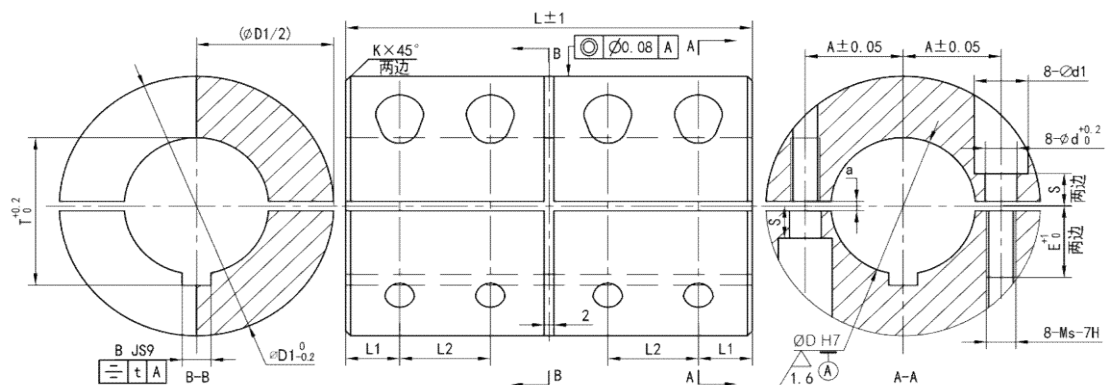
Dimensions (mm)

Model	D(H7)	D1	L	d	d1	A	L1	L2	Ms
CT-6	6	18	30	3.2	5.8	5.5	4	7.0	M3x8
CT-8	8	24	35	3.2	5.8	8.5	4.5	8.0	M3x10
CT-10	10	29	45	4.2	7.3	10	6	10.0	M4x12
CT-12	12	29	45	4.2	7.3	10	6	10	M4x12
CT-14	14	34	50	5.3	9.5	11.5	6	12	M5x16
CT-15	15	34	50	5.3	9.5	11.5	6	12	M5x16
CT-16	16	34	50	5.3	9.5	11.5	6	12	M5x16
CT-20	20	42	65	6.4	11.0	16.0	6	16	M6x16
CT-25	25	45	75	6.4	11	17.5	10	17	M6x16
CT-30	30	53	83	6.4	11	20.5	10.5	20.5	M6x18
CT-35	35	67	95	8.5	14	25	13	22	M8x25
CT-40	40	77	108	8.5	14	30	15	24	M8x25
CT-50	50	85	124	10.5	17	33	15	30	M10x25

Material: Steel C45, Stainless Steel.



TWO-PIECE CLAMP



Dimensions (mm)

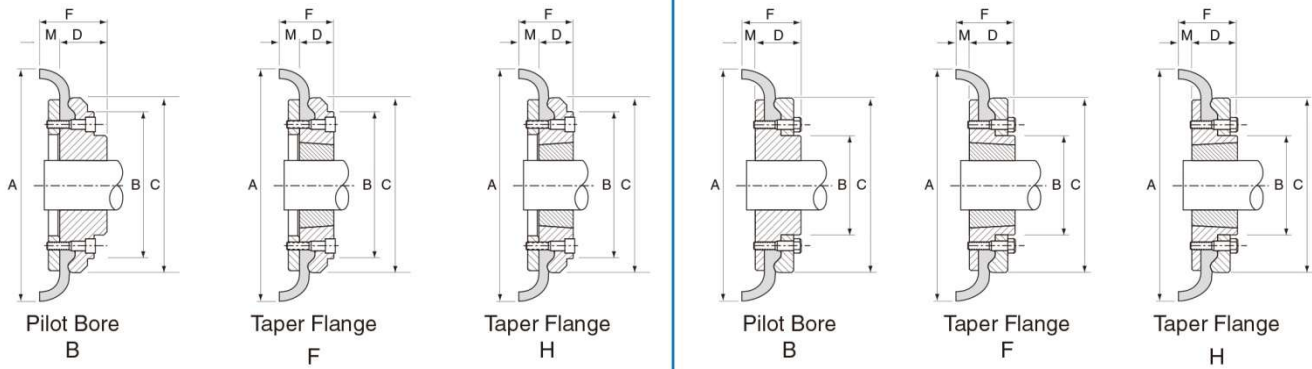
Model	D(H7)	D1	L	d	d1	A	L1	L2	Ms
CTG-6	6	18	30	3.2	5.8	5.5	4	7	M3x8
CTG-8	8	24	35	3.2	5.8	8.5	4.5	8	M3x10
CTG-10	10	29	45	4.2	7.3	10	6	10	M4x12
CTG-12	12	29	45	4.2	7.3	10	6	10	M4x12
CTG-14	14	34	50	5.3	9.5	11.5	6	12	M5x16
CTG-15	15	34	50	5.3	9.5	11.5	6	12	M5x16
CTG-16	16	34	50	5.3	9.5	11.5	6	12	M5x16
CTG-20	20	42	65	6.4	11	16	8	16	M6x16
CTG-25	25	45	75	6.4	11	17.5	10	17	M6x16
CTG-30	30	53	83	6.4	11	20.5	10.5	20.5	M6x18
CTG-35	35	67	95	8.5	14	25	13	22	M8x25
CTG-40	40	77	108	8.5	14	30	15	24	M8x26
CTG-50	50	85	124	10.5	17	33	15	30	M10x25

Material: Steel C45, Stainless Steel.



Size 040 to 060

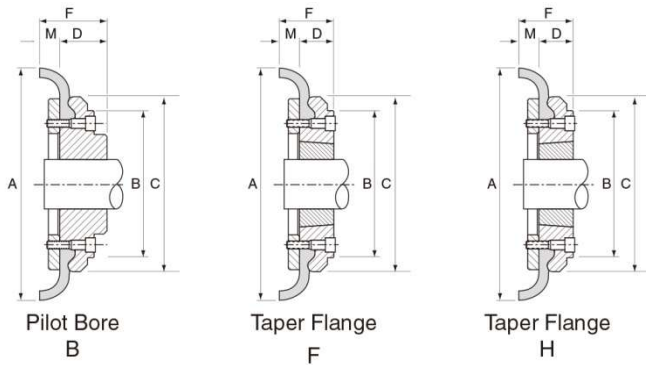
Size 070 to 250



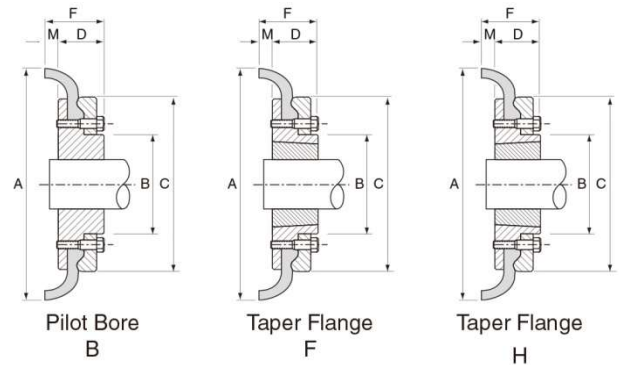
FEX Tyre Coupling Data

Coupling Size	Bush Size	Max Bore		Pilot Bore	A	B	C	M★	Type F & H		Type B		Weight# kg
		Metric	Inch						F	D	F	D	
040B	-	32	-	12	104	-	82	11.0	-	-	33	22	0.84
040F	1008	25	1"	-	104	-	82	11.0	33.0	22	-	-	0.84
040H	1008	25	1"	-	104	-	82	11.0	33.0	22	-	-	0.84
050B	-	38	-	15	133	79	100	12.5	-	-	45	32.5	1.26
050F	1210	32	1.1/4"	-	133	79	100	12.5	37.5	25	-	-	1.26
050H	1210	32	1.1/4"	-	133	79	100	12.5	37.5	25	-	-	1.26
060B	-	45	-	18	165	103	124.5	16.5	-	-	55	38.5	2.1
060F	1610	42	1.5/8"	-	165	103	124.5	16.5	41.5	25	-	-	2.1
060H	1610	42	1.5/8"	-	165	103	124.5	16.5	41.5	25	-	-	2.1
070B	-	50	-	22	187	80	142	11.5	-	-	46.5	35	3.26
070F	2012	50	2"	-	187	80	142	11.5	44.5	33	-	-	3.26
070H	1610	42	1.5/8"	-	187	80	142	11.5	42.5	31	-	-	3.15
080B	-	60	-	25	211	98	165	12.5	-	-	55	42.5	5.15
080F	2517	65	2.1/2"	-	211	98	165	12.5	58.5	46	-	-	5.15
080H	2012	50	2"	-	211	98	165	12.5	45.5	33	-	-	4.83
090B	-	70	-	28	235	108	187	13.5	-	-	63.5	50	7.46
090F	2517	65	2.1/2"	-	235	108	187	13.5	59.5	46	-	-	7.35
090H	2517	65	2.1/2"	-	235	108	187	13.5	59.5	46	-	-	7.35
100B	-	80	-	32	254	120	214	13.5	-	-	70.5	57	10.4
100F	3020	75	3"	-	254	120	214	13.5	65.5	52	-	-	10.4
100H	2517	65	2.1/2"	-	254	120	214	13.5	59.5	46	-	-	9.87
110B	-	90	-	30	279	134	232	12.5	-	-	70.5	58	13.1
110F	3020	75	3"	-	279	134	232	12.5	64.5	52	-	-	12.3
110H	3020	75	3"	-	279	134	232	12.5	64.5	52	-	-	12.3

Size 040 to 060



Size 070 to 250



FEK Tyre Coupling Data

Coupling Size	Bush Size	Max Bore		Pilot Bore	A	B	C	M★	Type F & H		Type B		Weight# kg
		Metric	Inch						F	D	F	D	
120B	-	100	-	38	314	143	262	14.5	-	-	84.5	70	17.7
120F	3525	100	4"	-	314	140	262	14.5	80.5	66	-	-	17.7
120H	3020	75	3"	-	314	140	262	14.5	66.5	52	-	-	16.7
140B	-	130	-	75	359	178	313	16.0	-	-	110.0	94	23.3
140F	3525	100	4"	-	359	178	313	16.0	82.0	66	-	-	23.4
140H	3525	100	4"	-	359	178	313	16.0	82.0	66	-	-	23.4
160B	-	140	-	75	402	197	347	15.0	-	-	117	102	37.6
160F	4030	115	4.1/2"	-	402	197	347	15.0	92.4	77.4	-	-	34.1
160H	4030	115	4.1/2"	-	402	197	347	15.0	92.4	77.4	-	-	34.1
180B	-	150	-	75	470	205	396	23.0	-	-	137	114	51.6
180F	4535	125	5"	-	470	205	396	23.0	112.0	89	-	-	44.3
180H	4535	125	5"	-	470	205	396	23.0	112.0	89	-	-	44.3
200B	-	150	-	85	508	206	433	24.0	-	-	138	114	61.1
200F	4535	125	5"	-	508	206	433	24.0	113.0	89	-	-	56.3
200H	4535	125	5"	-	508	206	433	24.0	113.0	89	-	-	56.3
220B	-	160	-	85	562	224	472	27.5	-	-	154.5	127	83.6
220F	5040	125	5"	-	562	224	472	27.5	129.5	102	-	-	75.6
220H	5040	125	5"	-	562	224	472	27.5	129.5	102	-	-	75.6
250B	-	190	-	88	628	254	532	28.5	-	-	160.5	132	109.0
250F	5040	125	5"	-	628	254	532	28.5	155.5	127			106.0
250H	5040	125	5"	-	628	254	532	28.5	155.5	127			106.0

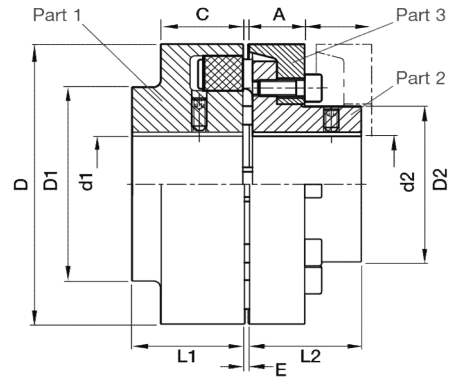
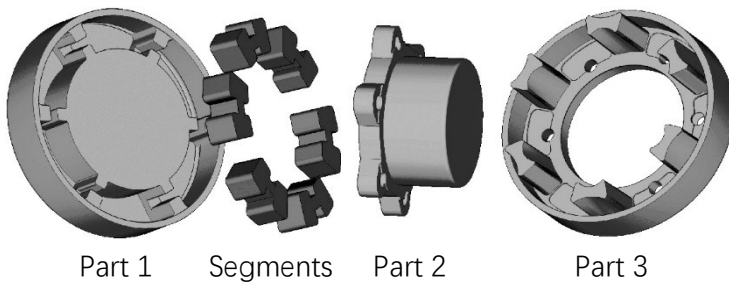
Notes:

= Is the weight for a half coupling.

★ = M is half the distance between flange faces.

All flexible tyres have an angular misalignment capacity up to 4°

NPX Coupling - Pilot Bored Type A



Material: Flange - GG25 Cast Iron, Segments - Nitrile

Specification - Pilot Bored Type A

Size	Power at 100 rev/min kW	Torque		Max Speed rev/min	Maximum Bore		D parts 1 & 3	L1 part 1	L2 part 2	D1 part 1	D2 part 2	A part 3	C part 1	E	Weight of flange kg		
		Rated Nm	Max Nm		d1 part 1	d2 part 2									part 1	part 2	part 3
110A	1.68	160	480	5000	48	38	110	40	40	86	62	20.0	34	3 - 4	2.0	1.38	1.97
125A	2.51	240	720	5000	55	45	125	50	50	100	75	23.5	36	2 - 4	3.1	2.42	1.97
140A	3.77	360	1080	4900	60	50	140	55	55	100	82	28.0	34	2 - 4	3.7	3.04	2.50
160A	5.86	560	1680	4250	65	58	160	60	60	108	95	28.0	40	2 - 6	5.1	4.19	3.49
180A	9.22	880	2640	3800	75	65	180	70	70	125	108	30.0	42	2 - 6	7.8	5.94	4.41
200A	14.03	1340	4020	3400	85	75	200	80	80	140	122	32.5	47	2 - 6	11.0	8.61	6.02
225A	20.94	2000	6000	3000	90	85	225	90	90	150	136	38.0	52	2 - 6	15.0	12.06	8.93
250A	29.32	2800	8400	2750	100	95	250	100	100	165	155	42.0	60	3 - 8	19.5	17.41	11.70

Order sample:

110A Part 1

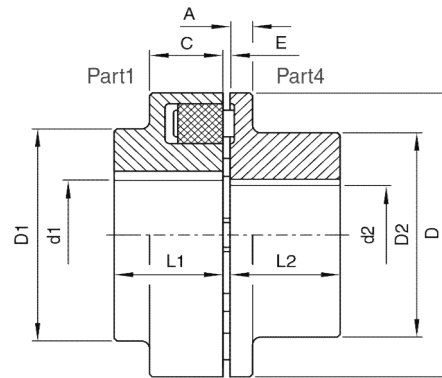
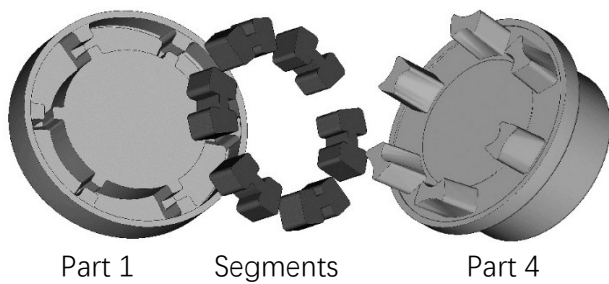
110A Segments

110A Part 2

110A Part 3

Or 110A one complete set

NPX Coupling - Pilot Bored Type B



Material: Flange - GG25 Cast Iron, Segments - Nitrile

Specification - Pilot Bored Type B

Size	Power at 100 rev/min kW	Torque		Max Speed rev/min	Maximum Bore		D parts 1 & 4	L1 part 1	L2 part 4	D1 part 1	D2 part 4	A part 4	C part 1	E	Weight of flange kg	
		Rated Nm	Max Nm		d1 part 1	d2 part 4									part 1	part 4
58B	0.20	19	57	5000	19	19	59	20	20	-	40	8	20	2 - 4	0.24	0.28
68B	0.36	34	102	5000	24	24	69	20	20	-	49	8	20	2 - 4	0.32	0.45
80B	0.63	60	180	5000	30	30	81	30	30	-	68	10	30	2 - 4	0.75	0.94
95B	1.05	100	300	5000	42	42	96	35	35	76	76	13	30	2 - 4	1.30	1.55
110B	1.68	160	480	5000	48	48	111	40	40	86	86	14	34	2 - 4	1.95	2.25
125B	2.51	240	720	5000	55	55	126	50	50	100	100	18	36	2 - 4	3.05	3.60
140B	3.77	360	1080	4900	60	60	141	55	55	100	100	20	34	2 - 4	3.65	4.50
160B	5.86	560	1680	4250	65	65	161	60	60	108	108	20	40	2 - 6	5.05	5.95
180B	9.22	880	2640	3800	75	75	180	70	70	125	125	20	42	2 - 6	7.80	8.50
200B	14.03	1340	4020	3400	85	85	200	80	80	140	140	24	47	2 - 6	11.0	12.4
225B	20.94	2000	6000	3000	90	90	225	90	90	150	150	18	52	2 - 6	15.0	15.5
250B	29.32	2800	8400	2750	100	100	250	100	100	165	165	18	60	3 - 8	19.5	19.5

Order sample:

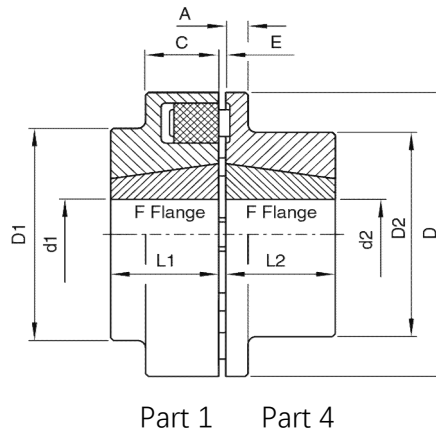
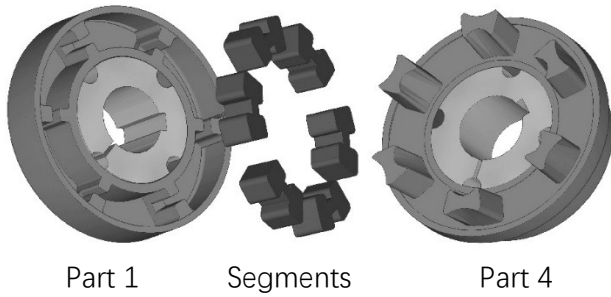
80B Part 1

80B Segments

80B Part 4

Or 80B one complete set

NPX Coupling - Taper Bored



Material: Flange - GG25 Cast Iron, Segments - Nitrile

Specification - Taper Bored

Size	Power at 100 rev/min kW	Torque		Max Speed rev/min	Bush for F flange	Max Bore d1/d2 parts 1 & 4	D parts 1 & 4	L1 part 1	L2 part 4	D1 part 1	D2 part 4	A part 4	C part 1	E	Weight of flange kg	
		Rated Nm	Max Nm												part 1	part 4
80T	0.63	60	180	5000	1108	28	81	22.5	22.5	-	-	22.5	22.5	2 - 4	0.75	0.94
95T	1.05	100	300	5000	1210	32	96	26.5	26.5	-	76	13.0	26.5	2 - 4	1.30	1.55
110T	1.68	160	480	5000	1615	42	111	38.5	38.5	86	86	14.0	34	2 - 4	1.95	2.25
125T	2.51	240	720	5000	2012	50	126	32.5	32.5	-	100	18.0	32.5	2 - 4	3.05	3.60
140T	3.77	360	1080	4900	2012	50	141	32.5	32.5	-	100	20.0	32.5	2 - 4	3.65	4.50
160T	5.86	560	1680	4250	2517	65	161	46.0	46.0	108	108	20.0	40	2 - 6	5.05	5.95
180T	9.22	880	2640	3800	2517	65	180	46.0	46.0	125	125	20.0	42	2 - 6	7.80	8.50
200T	14.03	1340	4020	3400	3020	75	200	52.0	52.0	140	140	24	47	2 - 6	11.0	12.4
225T	20.94	2000	6000	3000	3020	75	225	52.0	52.0	150	150	18	52	2 - 6	15.0	15.5
250T	29.32	2800	8400	2750	3535	90	250	90.0	90.0	165	165	18	60	3 - 8	19.5	19.5

Weight and inertia figures are for a mid range bore.

The weight without taper bush.

Part 1 and Part 4 without taper bushes.

Order sample:

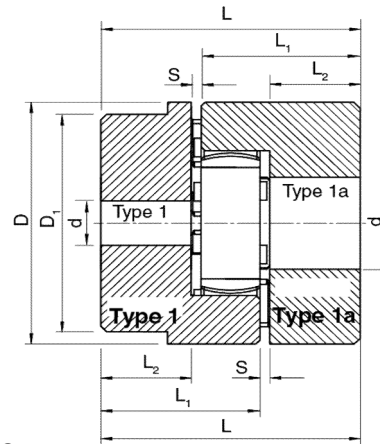
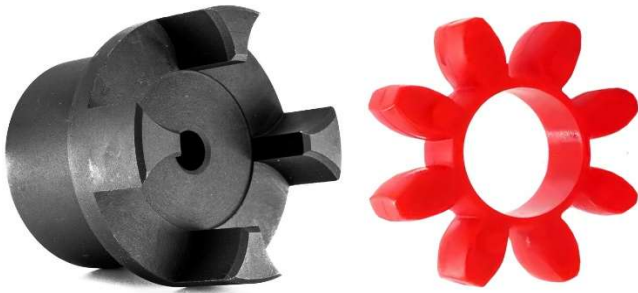
80T Part 1

80T Segments

80T Part 4

Or 80T one complete set

RPX Coupling - Pilot Bored



Material: Flange - GG25 Cast Iron, Elements - Polyurethane

Specification

Size	Type	Max Speed rev/min	Torque		D	D1	d-min	d-max	S	L1	L2	L	Material	Weight kg/hub
			92 shore Mn	98 shore Mn										
19	1	19000	10	17	40	32	6	19	1.0	39.0	25	65	Al	0.19
	1a				40	-	19	24	1.0	39.0	25	65	Al	0.19
24	1	14000	35	60	56	40	9	24	1.0	46.0	30	77	Al	0.38
	1a				56	-	22	28	1.0	46.0	30	77	Al	0.38
28	1	11800	95	160	65	48	10	28	1.5	52.5	35	89	Al	0.62
	1a				65	-	28	38	1.5	52.5	35	89	Al	0.62
38	1	9500	190	325	80	66	12	38	1.0	66.0	45	112	CI	1.36
	1a				80	-	38	45	1.0	66.0	45	112	CI	1.36
42	1	8000	265	450	95	75	14	42	1.0	73.0	50	124	CI	2.03
	1a				95	-	42	55	1.0	73.0	50	124	CI	2.03
48	1	7100	310	525	105	85	15	48	1.5	80.5	56	138	CI	2.85
	1a				105	-	48	60	1.5	80.5	56	138	CI	2.85
55	1	6300	410	685	120	98	20	55	2.0	91.0	65	158	CI	4.32
	1a				120	-	55	70	2.0	91.0	65	158	CI	4.32
65	1	5600	625	940	135	115	20	65	1.5	105.5	75	182	CI	6.66
75	1	4750	1280	1920	160	135	30	75	1.0	120.0	85	206	CI	10.48
90	1	3750	2400	3600	200	160	40	90	1.5	139.5	100	241	CI	17.89

RPX elements are manufactured from polyurethane and are available in Shore 92(yellow) and Shore 98(red) hardness.

Material: Al=Aluminum CI=GG25 Cast Iron

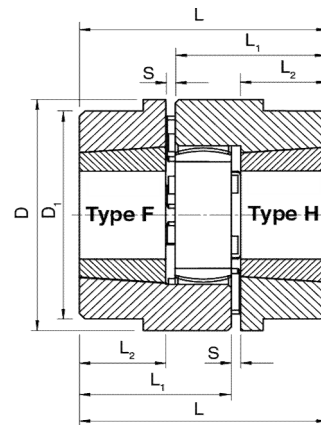
Order sample:

19 type1

19 type1a

19 element yellow or red

RPX Coupling - Taper Bored



Material: Flange - GG25 Cast Iron, Elements - Polyurethane

Specification

Size	Type	Max Speed rev/min	Torque		Bush size	Max bore	D	D1	S	L1	L2	L	Material	Weight kg/hub
			92 shore Mn	98 shore Mn										
24	F	14000	35	60	1008	25	56	-	1.0	39.0	23	63	CI	0.31
	H				1008	25	56	-	1.0	39.0	23	63	CI	0.31
28	F	11800	95	160	1108	28	65	-	1.5	40.5	23	65	CI	0.46
	H				1108	28	65	-	1.5	40.5	23	65	CI	0.46
38	F	9500	190	325	1108	28	80	78	1.0	44.0	23	68	CI	0.79
	H				1108	28	80	78	1.0	44.0	23	68	CI	0.79
42	F	8000	265	450	1610	42	95	94	1.0	49.0	26	76	CI	1.10
	H				1610	42	95	94	1.0	49.0	26	76	CI	1.10
48	F	7100	310	525	1615	42	105	104	1.5	63.5	39	104	CI	2.07
	H				1615	42	105	104	1.5	63.5	39	104	CI	2.07
55	F	6300	410	685	2012	50	120	118	2.0	59.0	33	94	CI	2.22
	H				2012	50	120	118	2.0	59.0	33	94	CI	2.22
65	F	5600	625	940	2012	50	135	133	1.5	63.5	33	98	CI	3.14
	H				2517	65	135	133	1.5	75.5	45	122	CI	4.03
75	F	4750	1280	1920	2517	65	160	135	1.0	81.0	46	128	CI	6.69
	H				2020	75	160	135	1.0	87.0	52	140	CI	4.99
90	F	3750	2400	3600	3020	75	200	160	1.5	91.5	52	145	CI	7.74
	H				3525	100	200	160	1.5	103.5	64	169	CI	8.74

RPX elements are manufactured from polyurethane and are available in Shore 92(yellow) and Shore 98(red) hardness.

Material: Al=Aluminum CI=GG25 Cast Iron

Order sample:

24 type F

24 type H

24 element yellow or red